



GUILDFORD
BOROUGH

James Whiteman
Managing Director

www.guildford.gov.uk

Dear Councillor

PLANNING COMMITTEE - WEDNESDAY 4 NOVEMBER 2020

Please find attached the following:

Presentations (Pages 1 - 84)

Yours sincerely

Sophie Butcher, Democratic Services Officer

Encs

This page is intentionally left blank

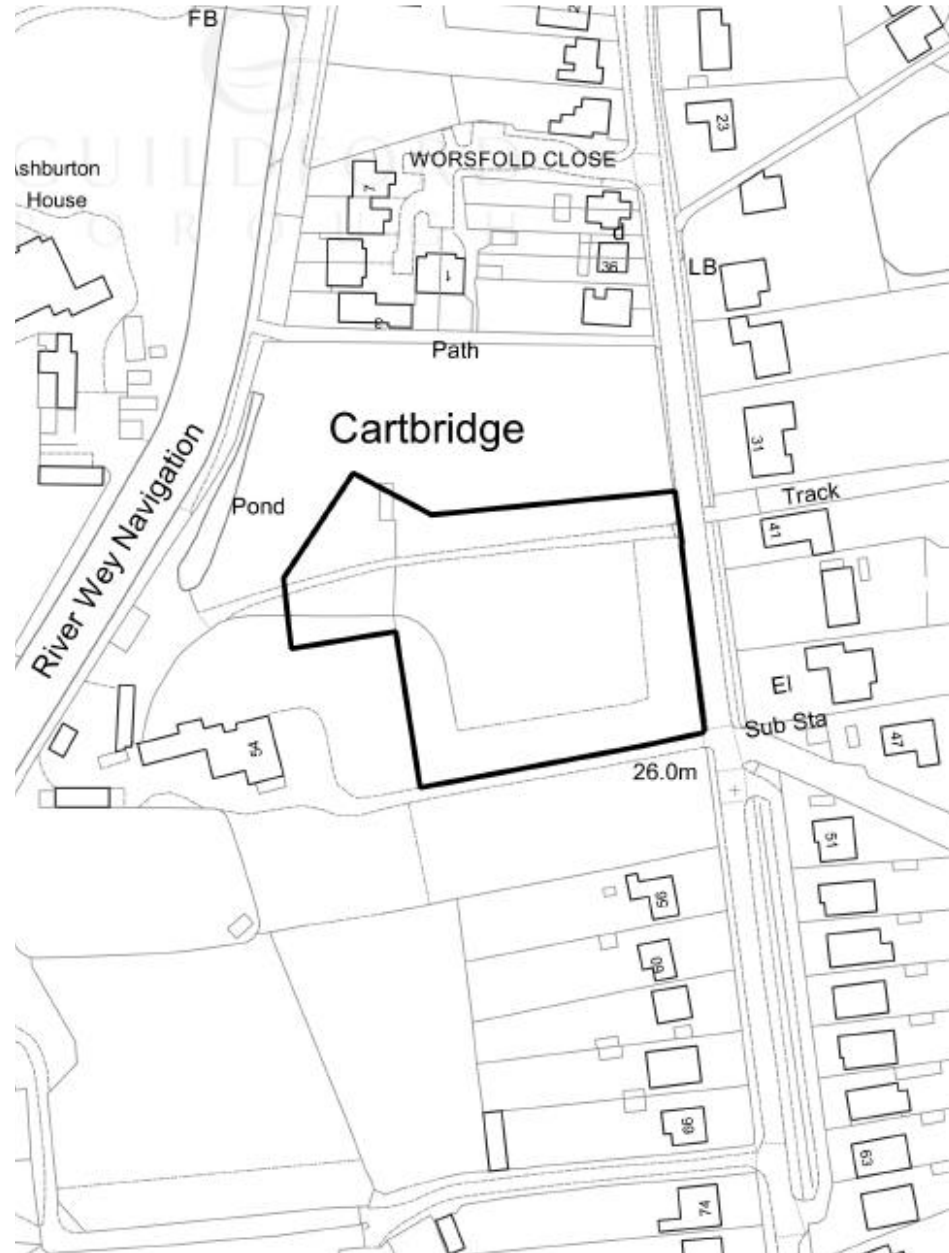
19/P/02237

**Land adjacent to
Pembroke House
54 Potters Lane
Send**

[Previous](#)

[Next](#)

[Home](#)



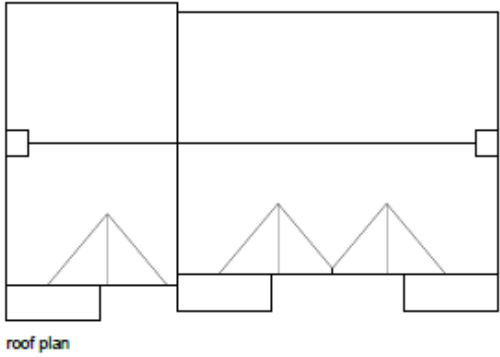


Block plan

[Previous](#)

[Next](#)

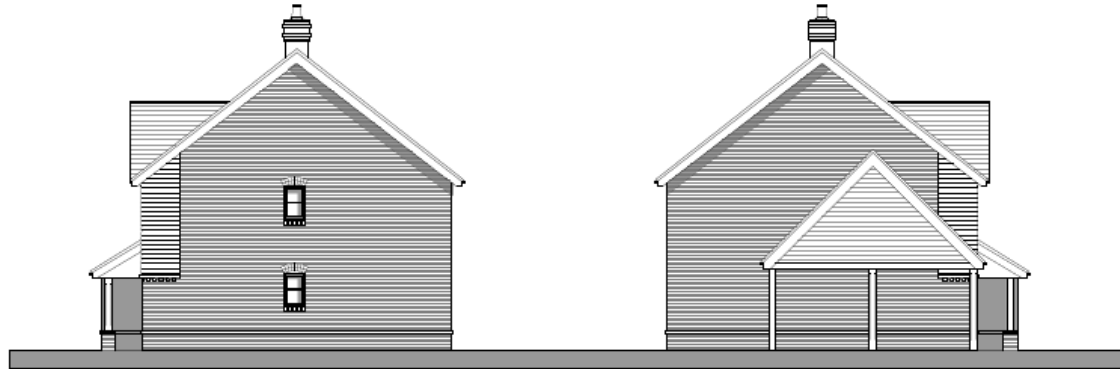
[Home](#)





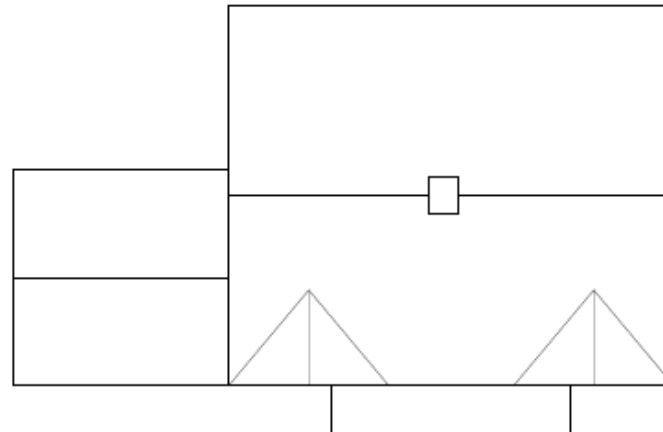
front elevation

rear elevation



side elevation

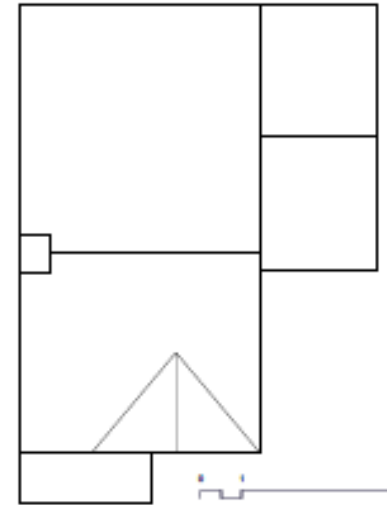
side elevation





front elevation

rear elevation



roof plan



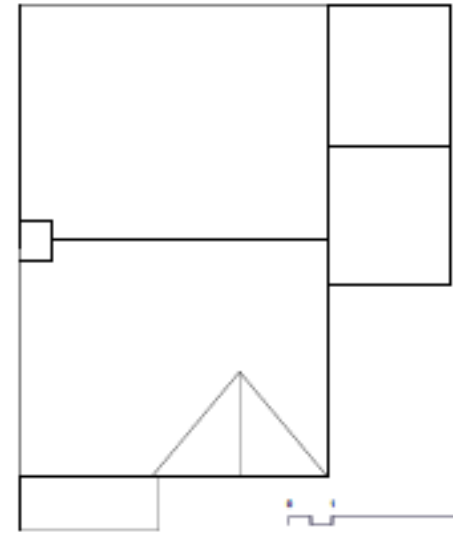
side elevation

side elevation



front elevation

rear elevation

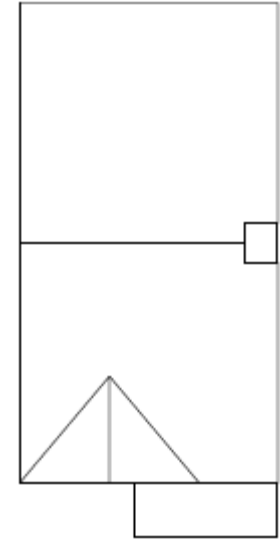


roof plan

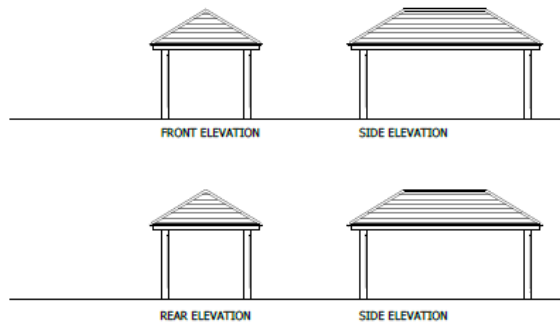


side elevation

side elevation



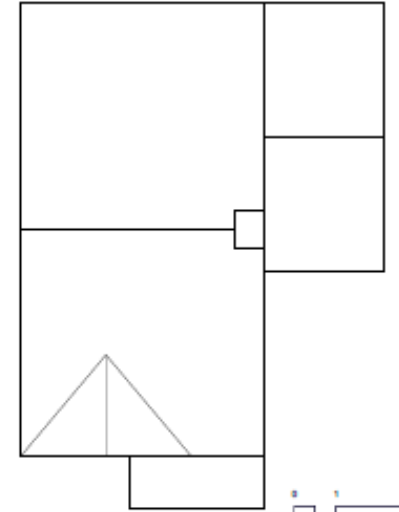
roof plan





front elevation

rear elevation

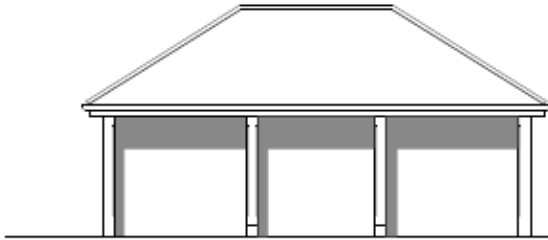


roof plan

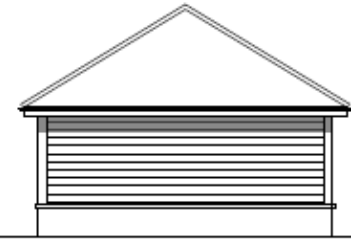


side elevation

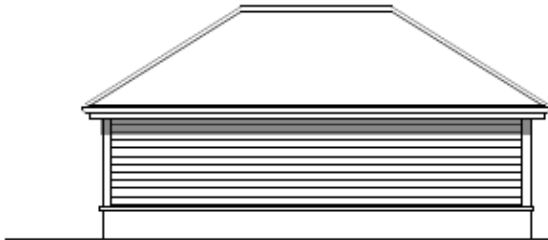
side elevation



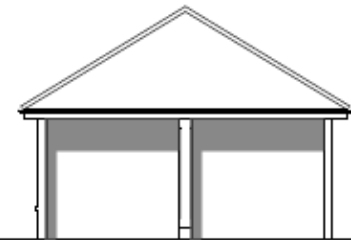
Front Elevation



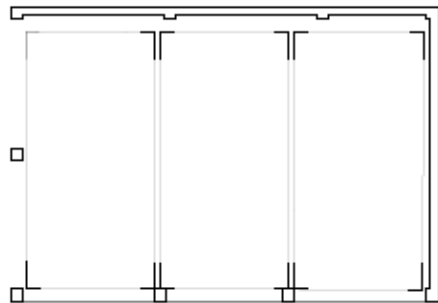
Side Elevation



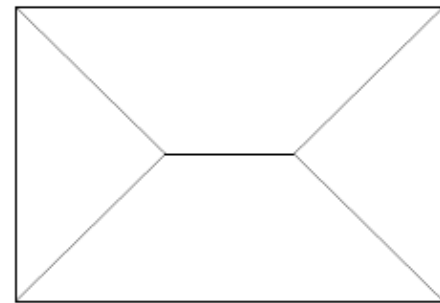
Rear Elevation



Side Elevation



Floor plan



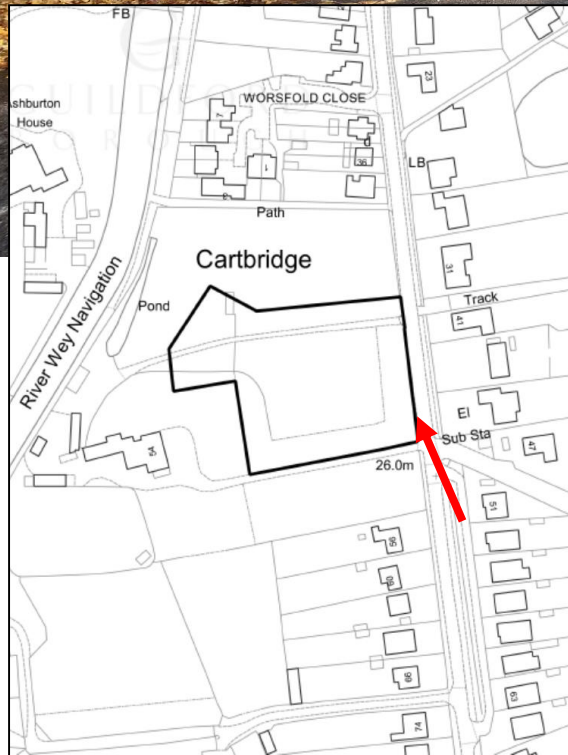
roof plan



proposed street scene along Potters Lane
section A - A



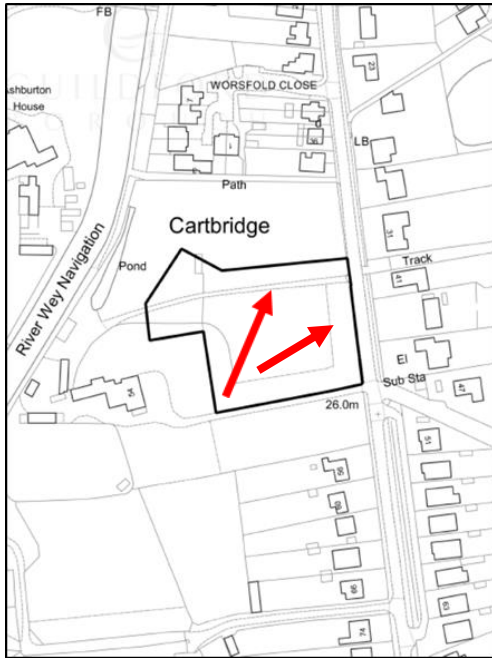
section B - B



[Previous](#)

[Next](#)

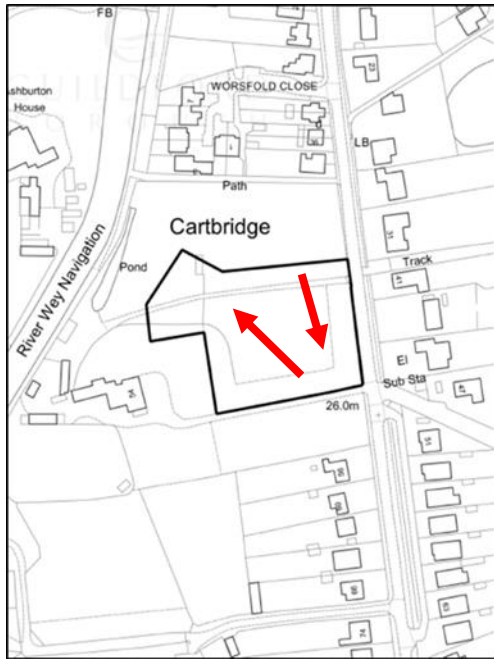
[Home](#)

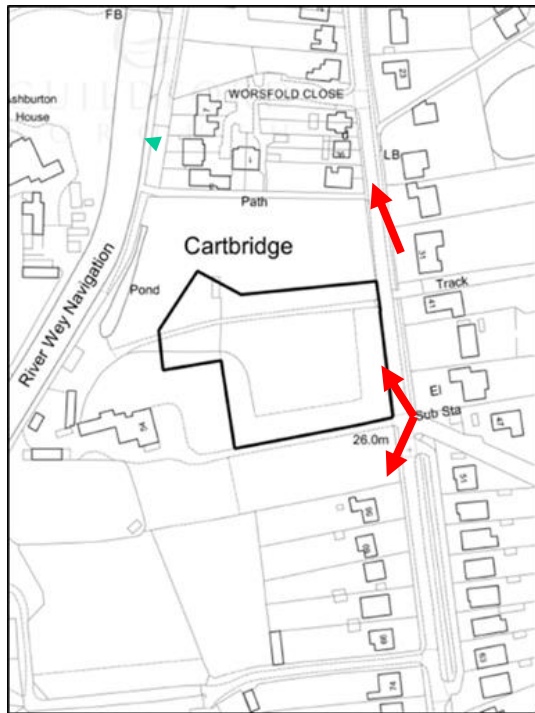


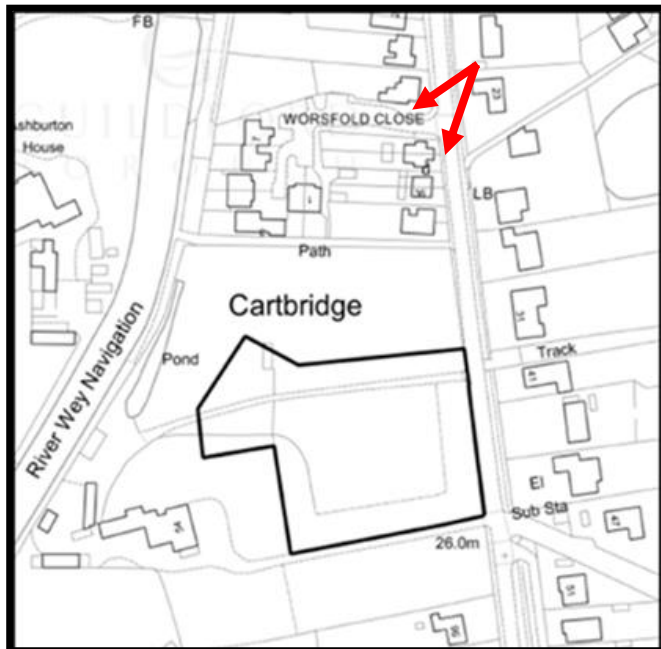
[Previous](#)

[Next](#)

[Home](#)







20/P/01066

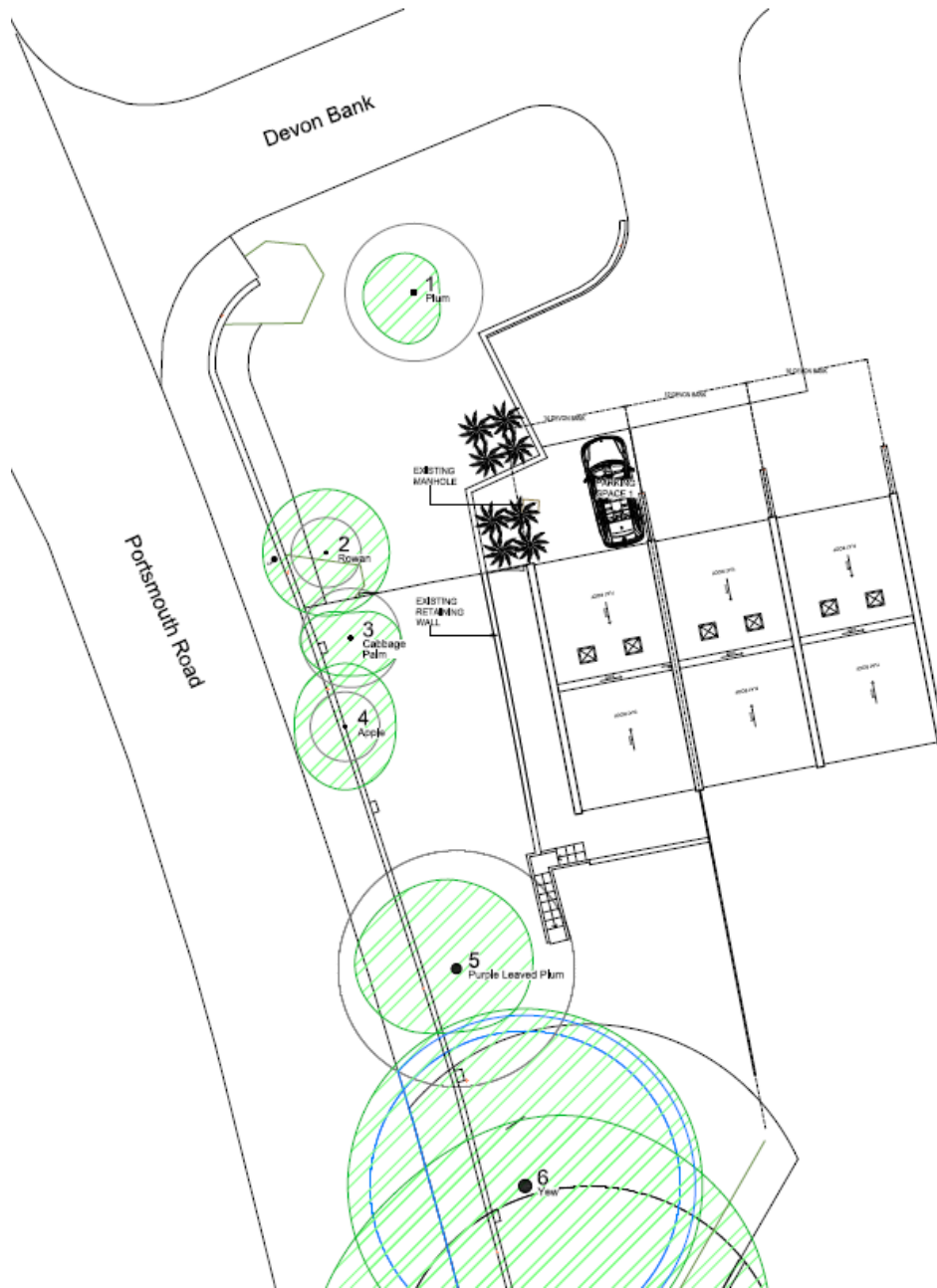
**14 Devon Bank
Guildford**

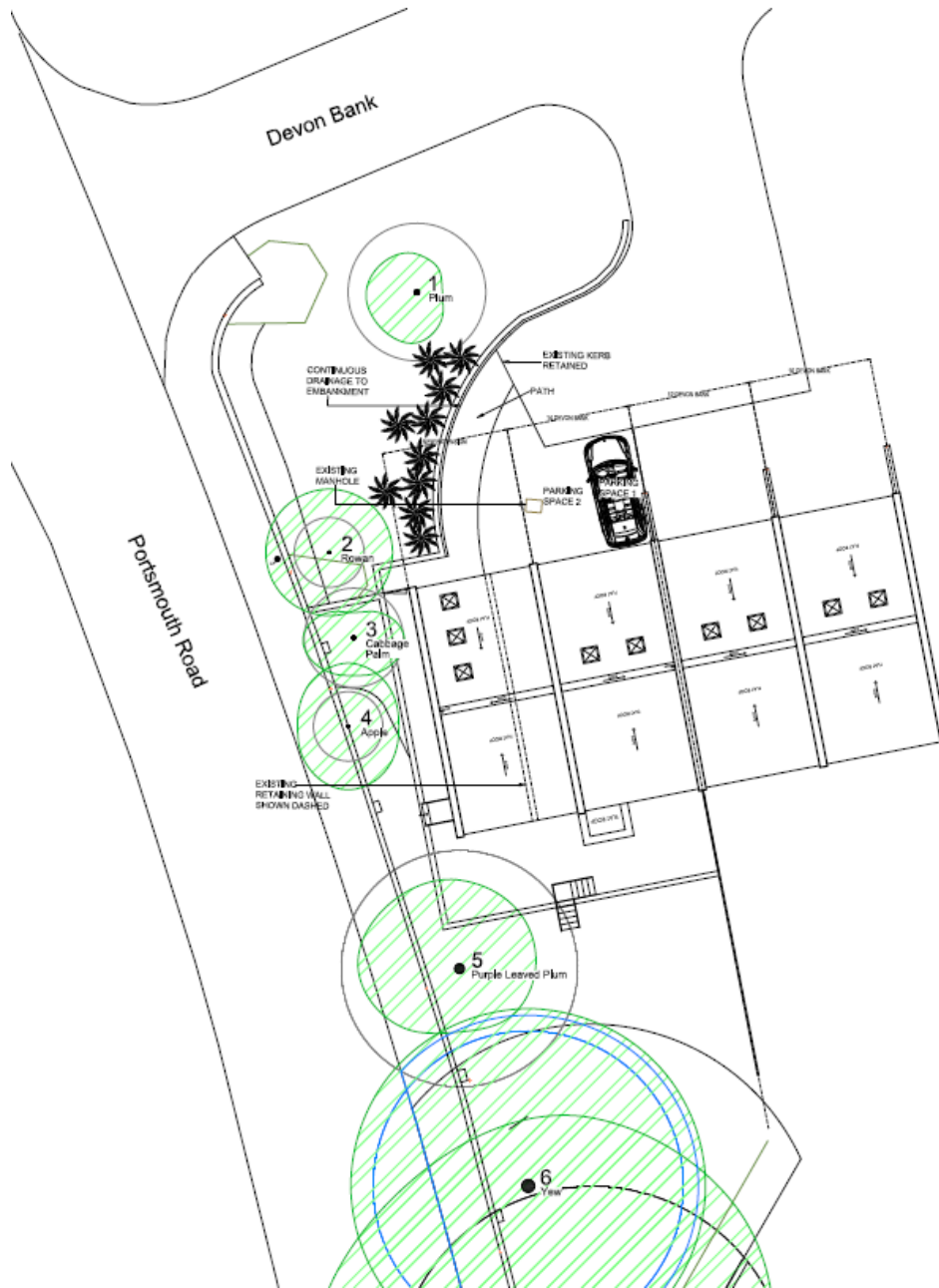
[Previous](#)

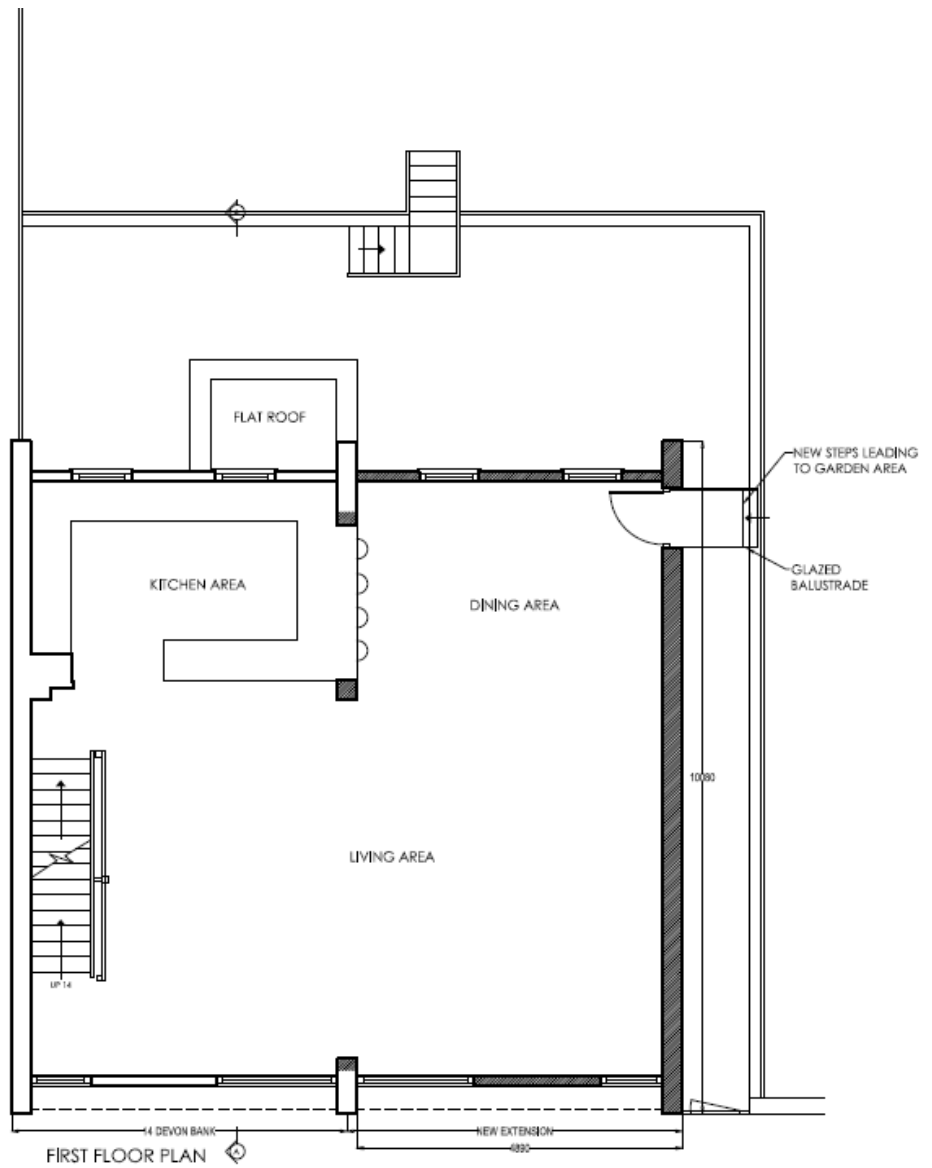
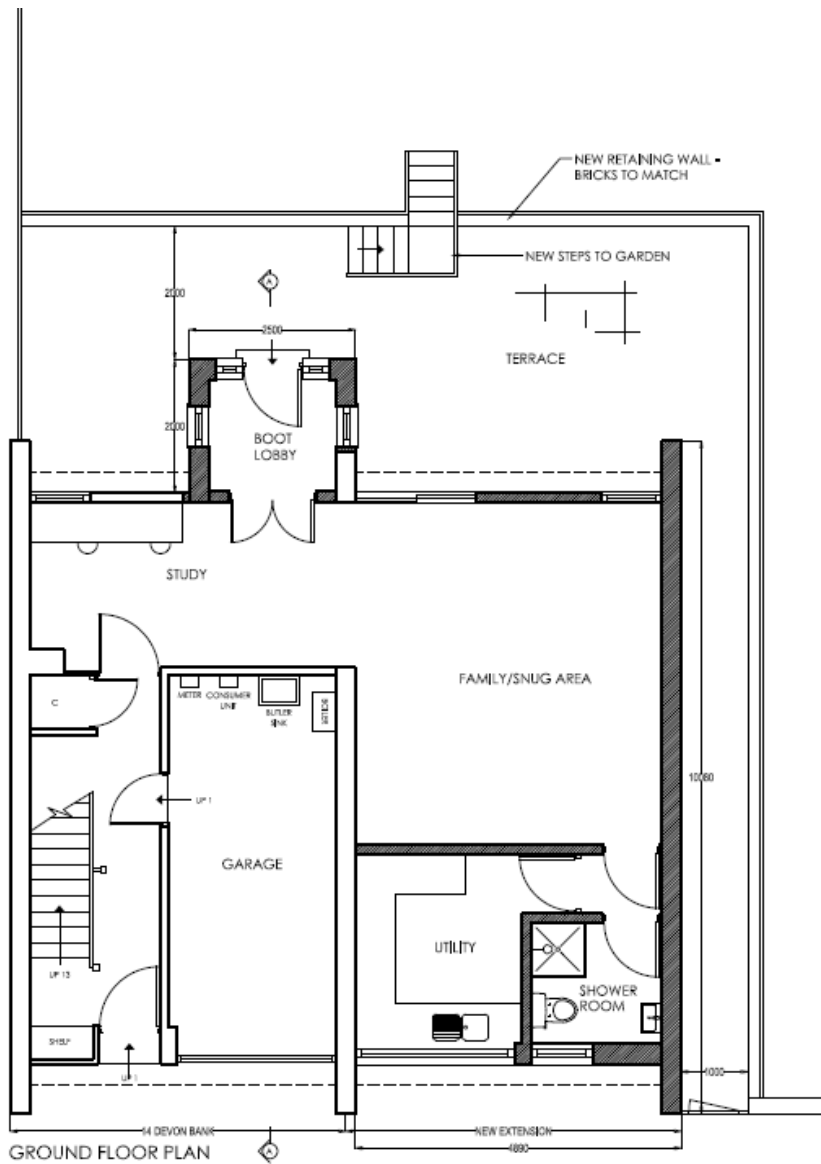
[Next](#)

[Home](#)







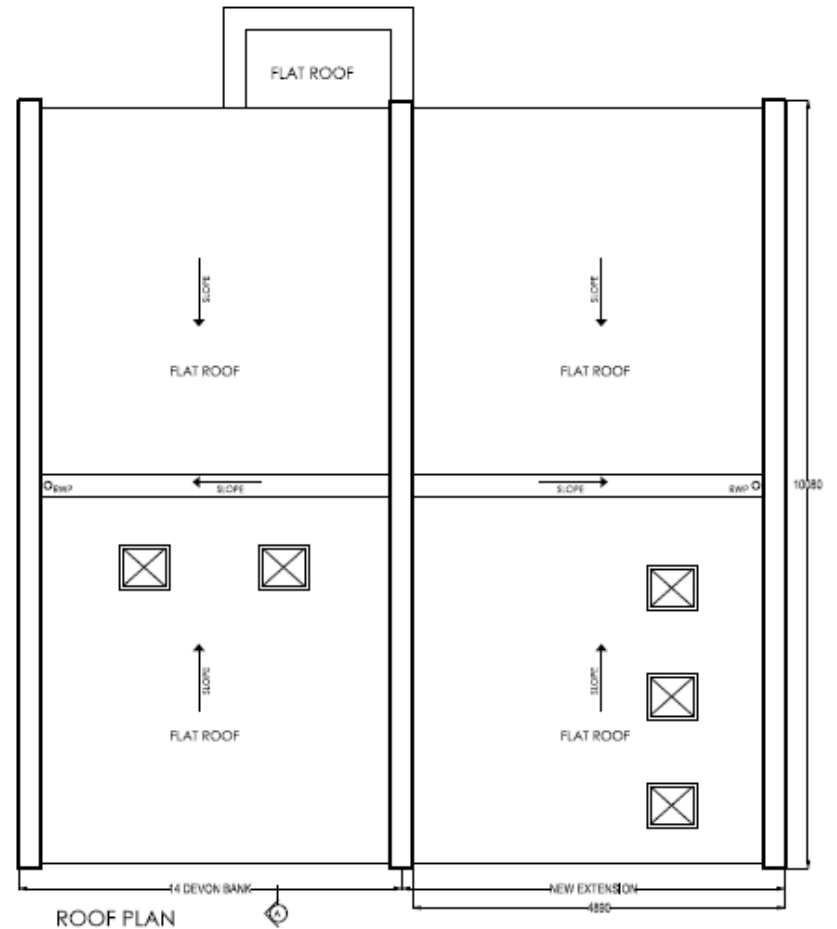
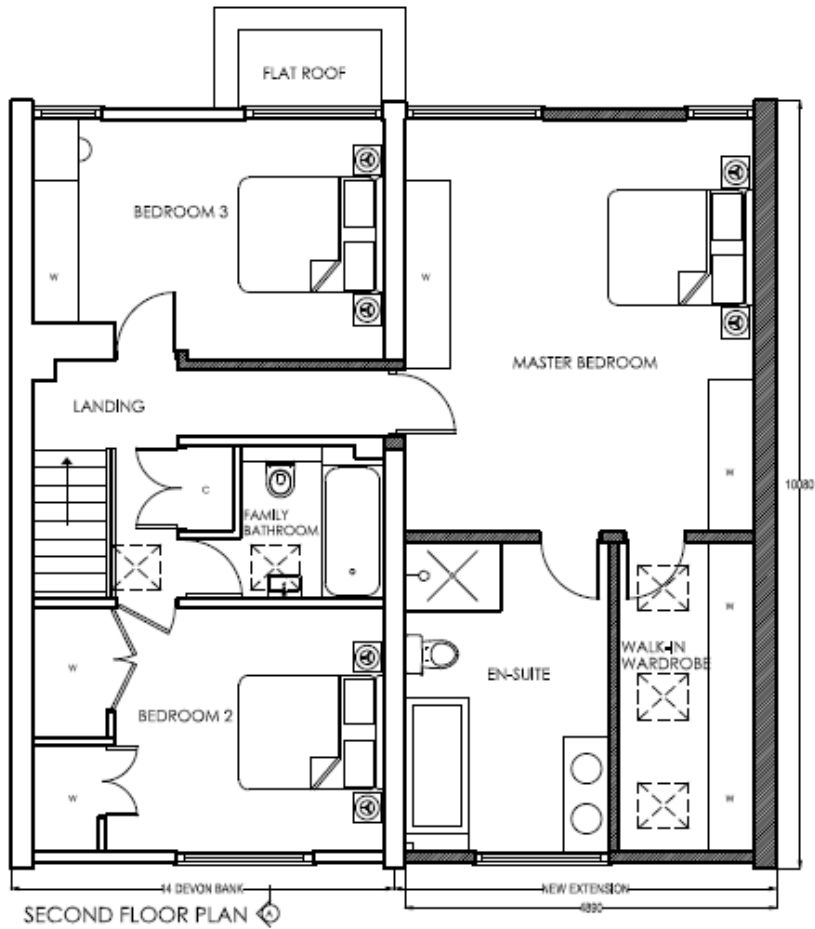


Proposed Ground and First Floor Plans

[Previous](#)

[Next](#)

[Home](#)

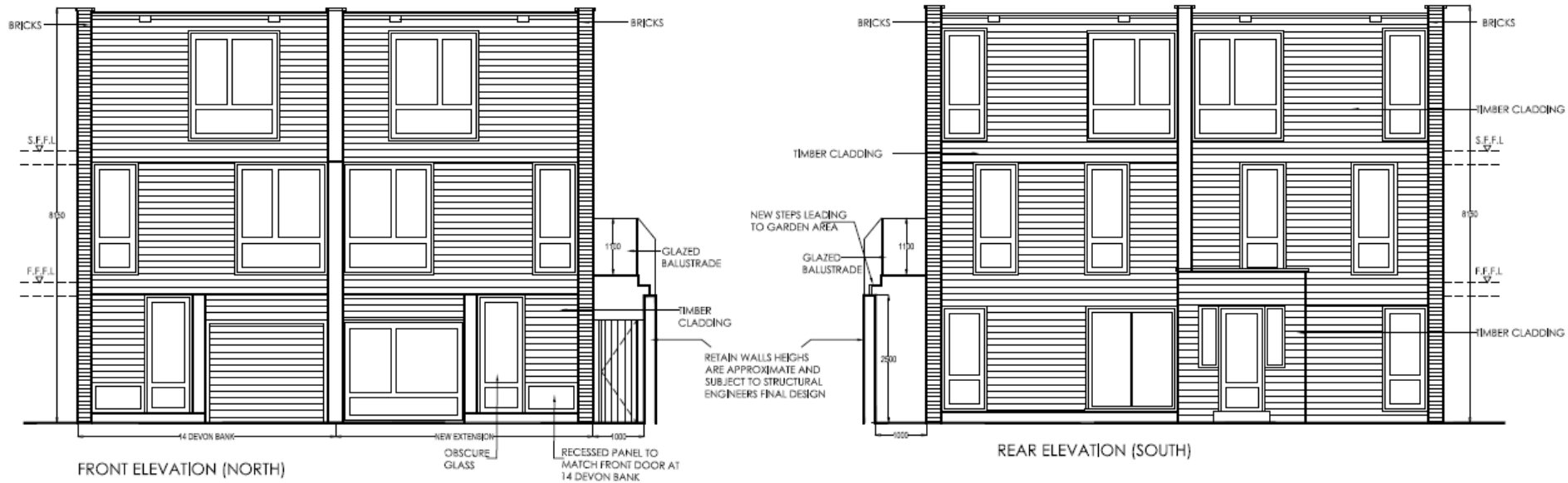


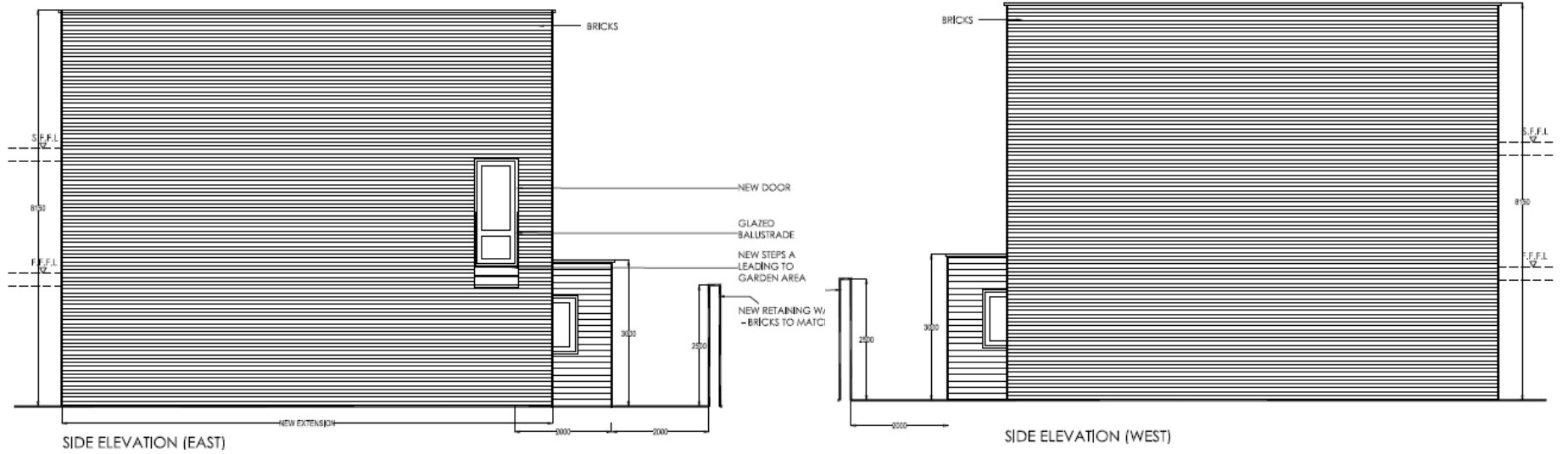
Proposed second floor and roof plans

Previous

Next

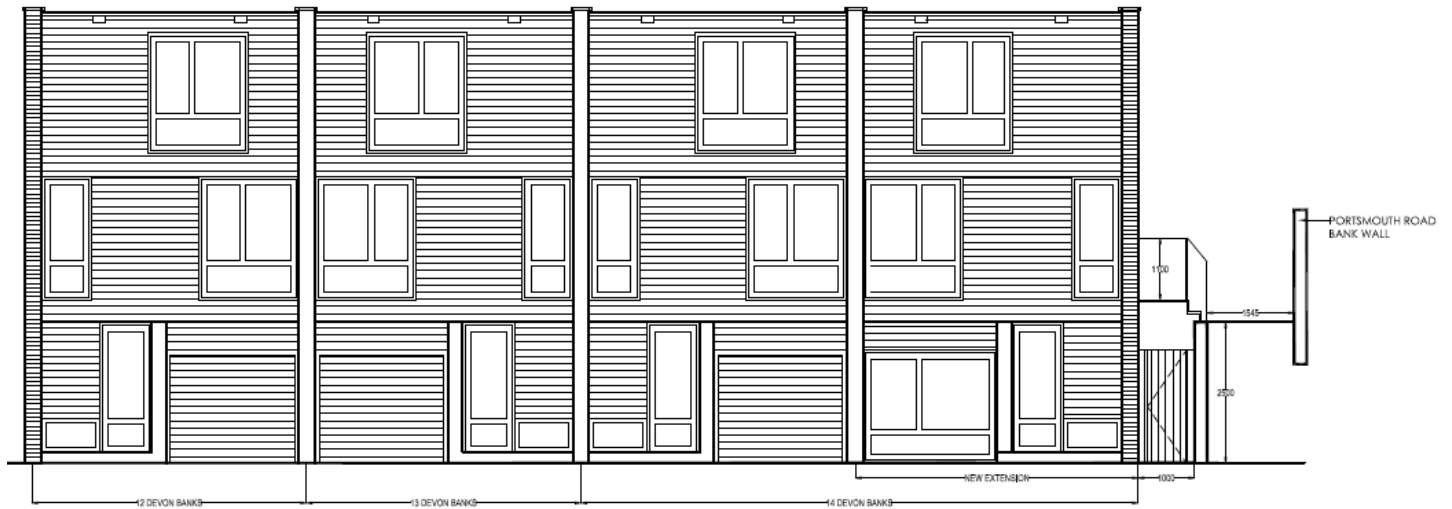
Home



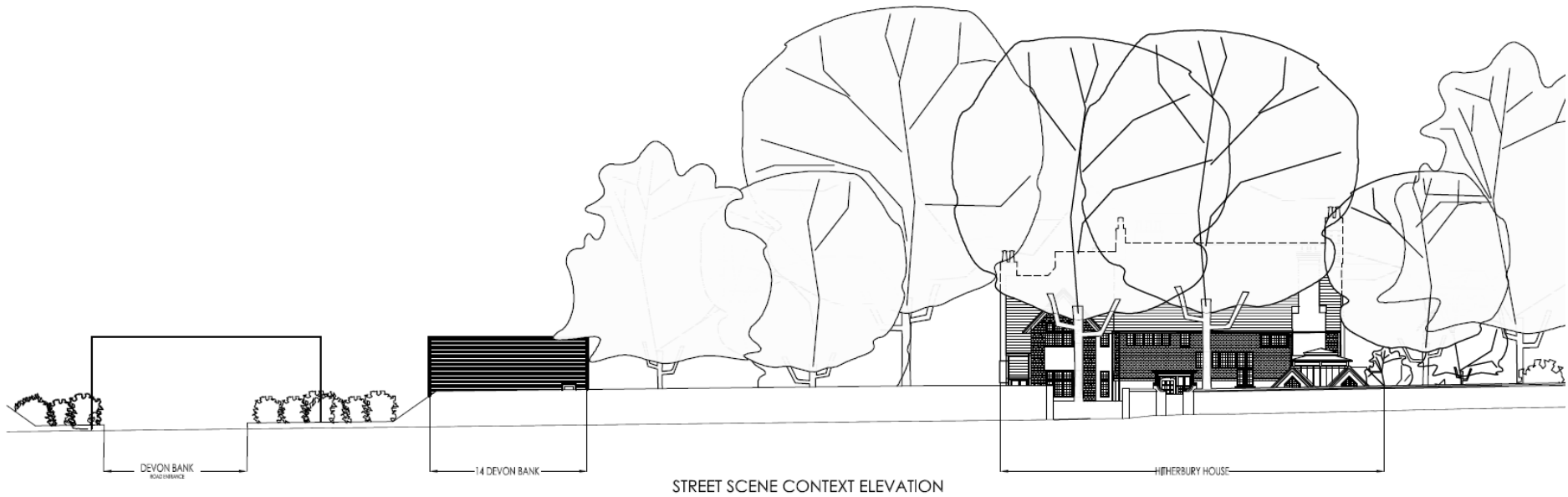


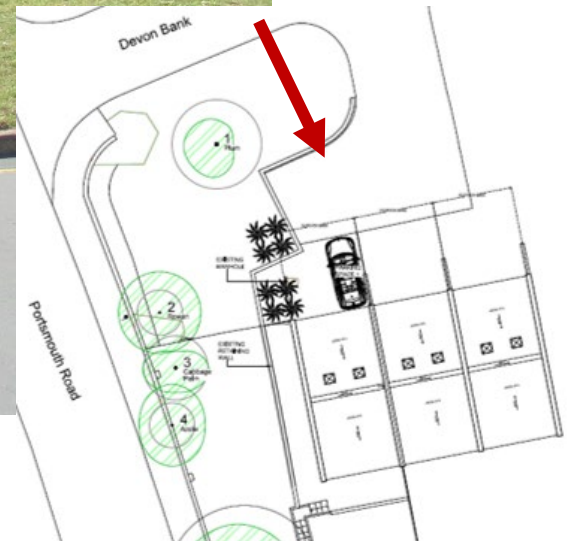


EXISTING STREET SCENE CONTEXT NORTH ELEVATION



PROPOSED STREET SCENE CONTEXT NORTH ELEVATION

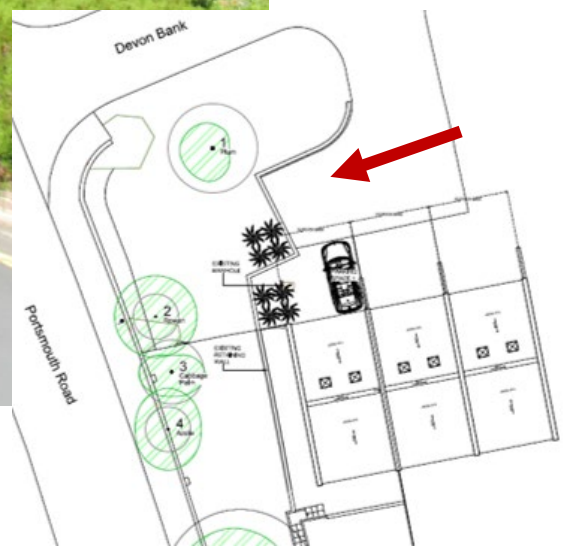




[Previous](#)

[Next](#)

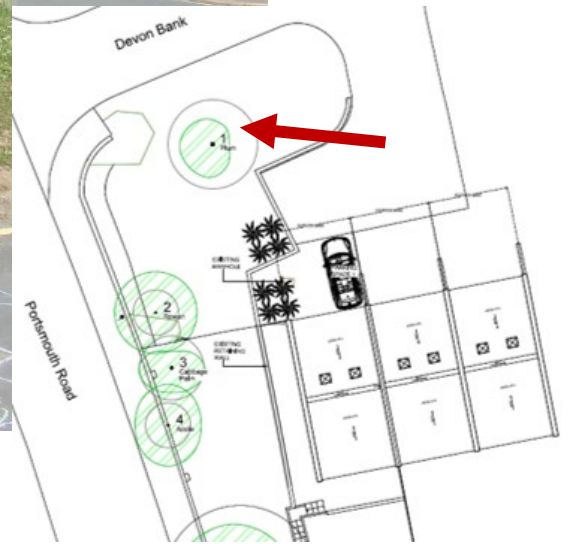
[Home](#)



[Previous](#)

[Next](#)

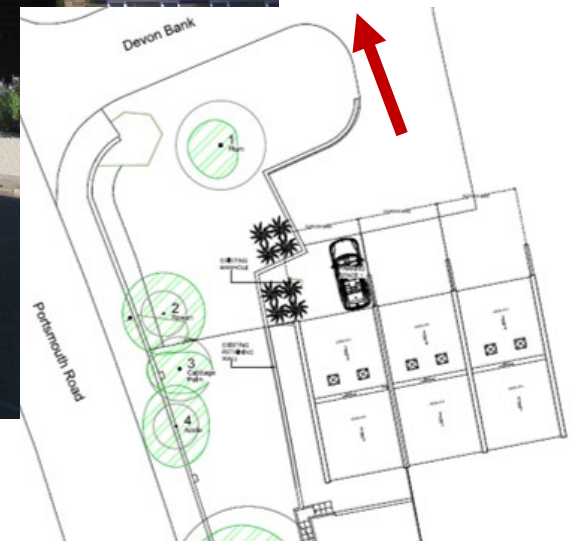
[Home](#)



[Previous](#)

[Next](#)

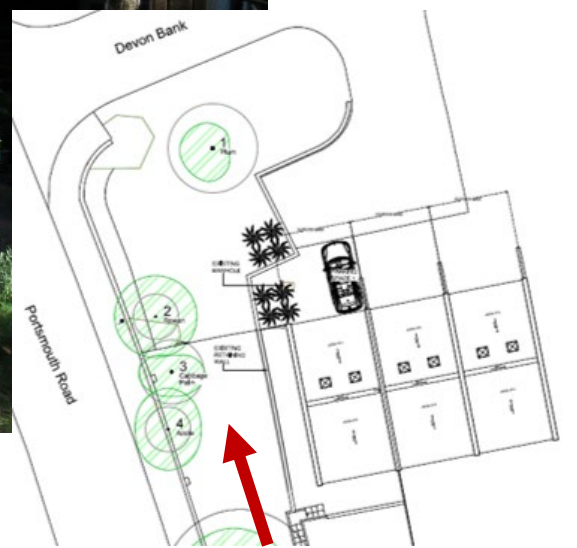
[Home](#)



[Previous](#)

[Next](#)

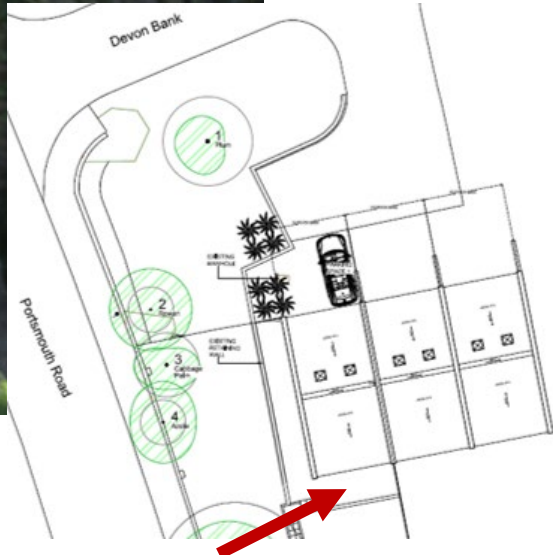
[Home](#)



[Previous](#)

[Next](#)

[Home](#)



[Previous](#)

[Next](#)

[Home](#)

20/P/01163

**Holy Trinity Parish Office
5 Trinity Churchyard
Guildford**

[Previous](#)

[Next](#)

[Home](#)



Block plan

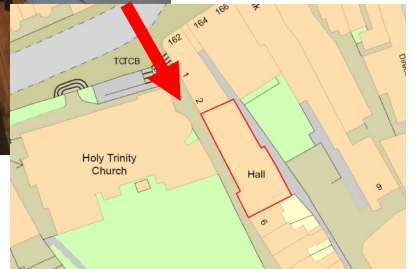
[Previous](#)

[Next](#)

[Home](#)







[Previous](#)

[Next](#)

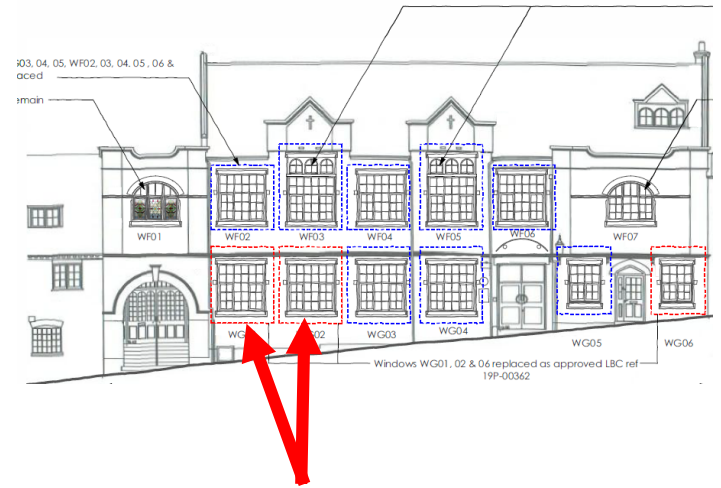
[Home](#)



[Previous](#)

[Next](#)

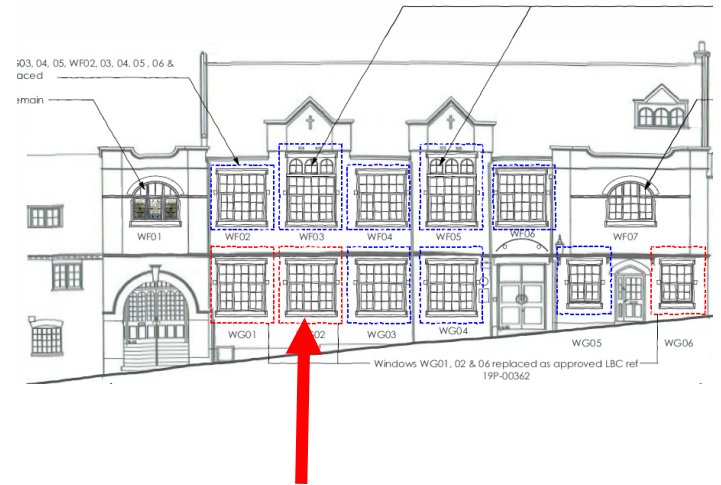
[Home](#)



[Previous](#)

[Next](#)

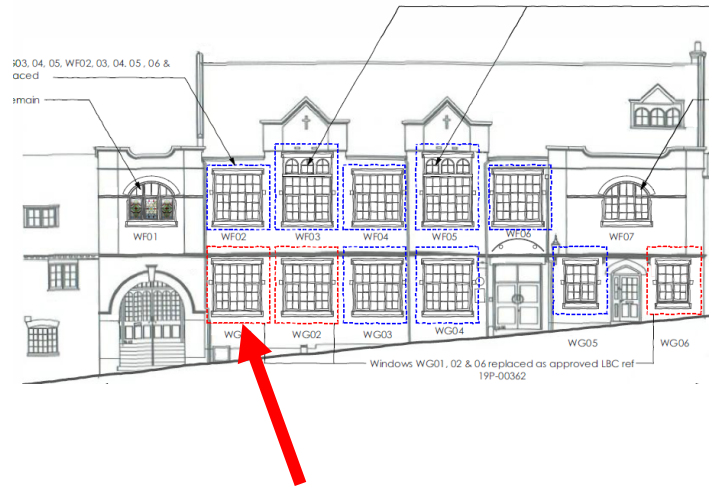
[Home](#)



[Previous](#)

[Next](#)

[Home](#)



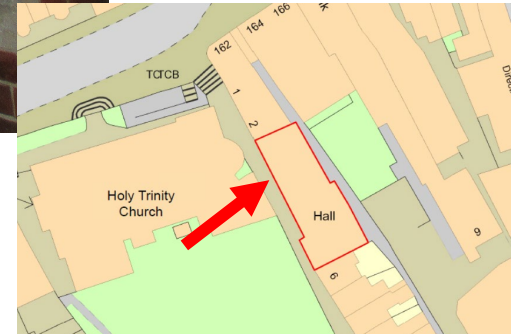
[Previous](#)

[Next](#)

[Home](#)



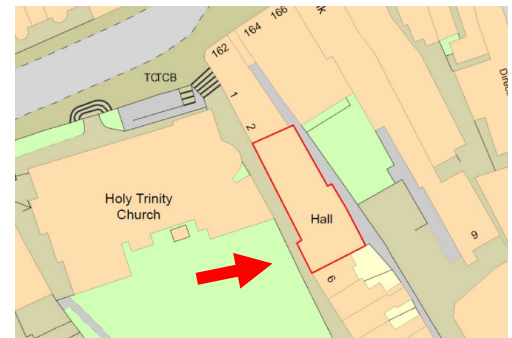
TO THE BURY OF GOD
AND FOR THE USE OF HIS CHURCH
THIS STONE WAS LAID BY
W. HERBERT RYLE
OCTOBER 14TH 1808



[Previous](#)

[Next](#)

[Home](#)



[Previous](#)

[Next](#)

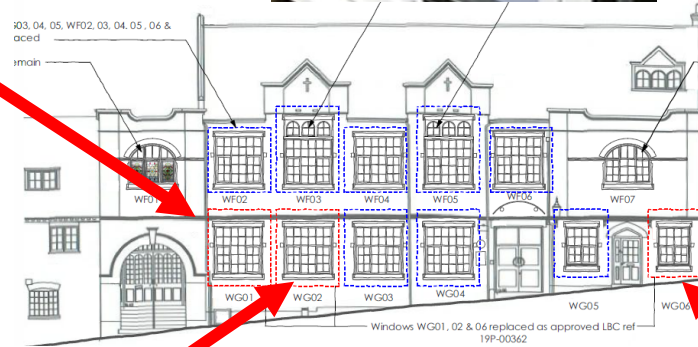
[Home](#)



[Previous](#)

[Next](#)

[Home](#)



[Previous](#)

[Next](#)

[Home](#)

This page is intentionally left blank

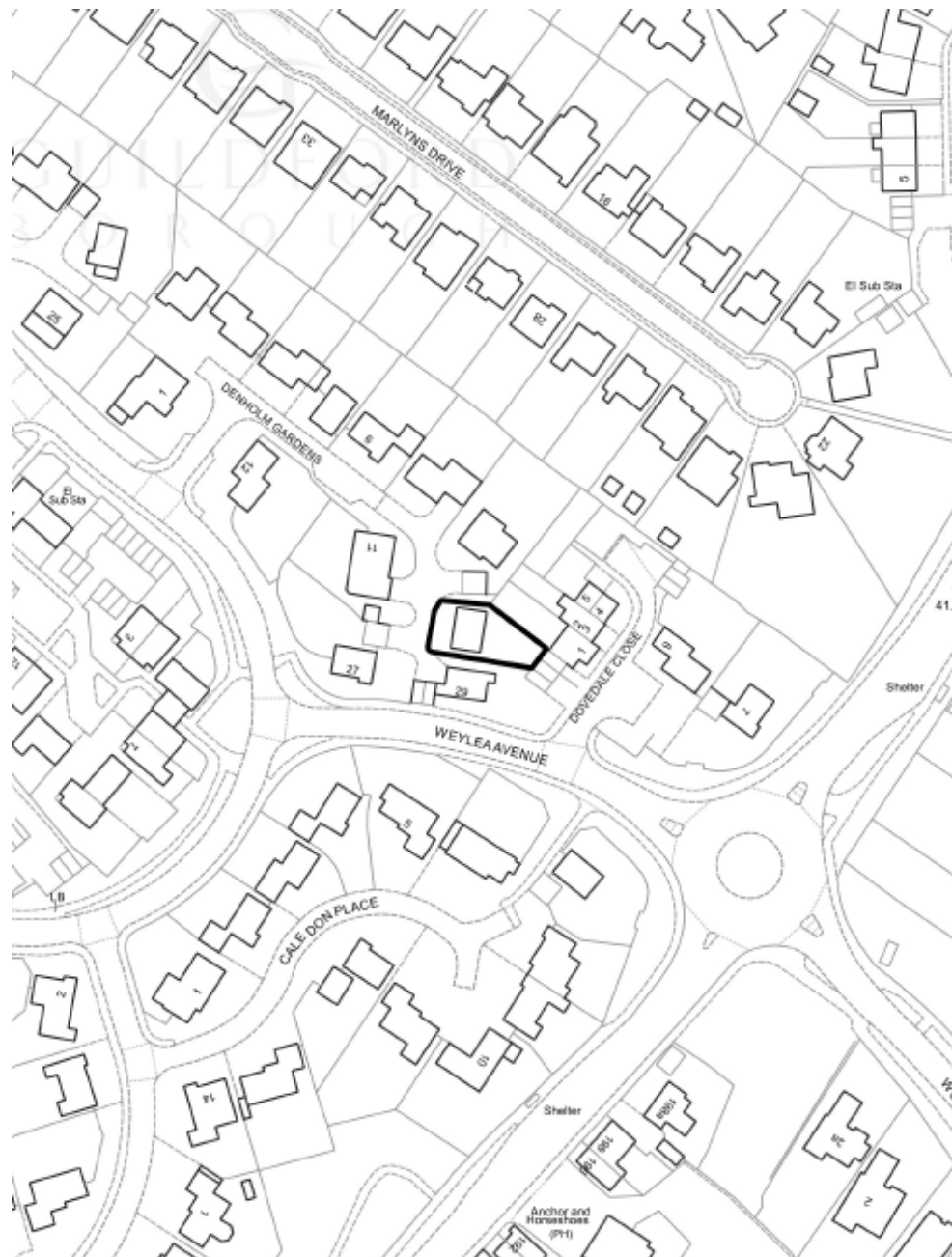
20/P/01287

**9 Denholm Gardens
Guildford**

[Previous](#)

[Next](#)

[Home](#)

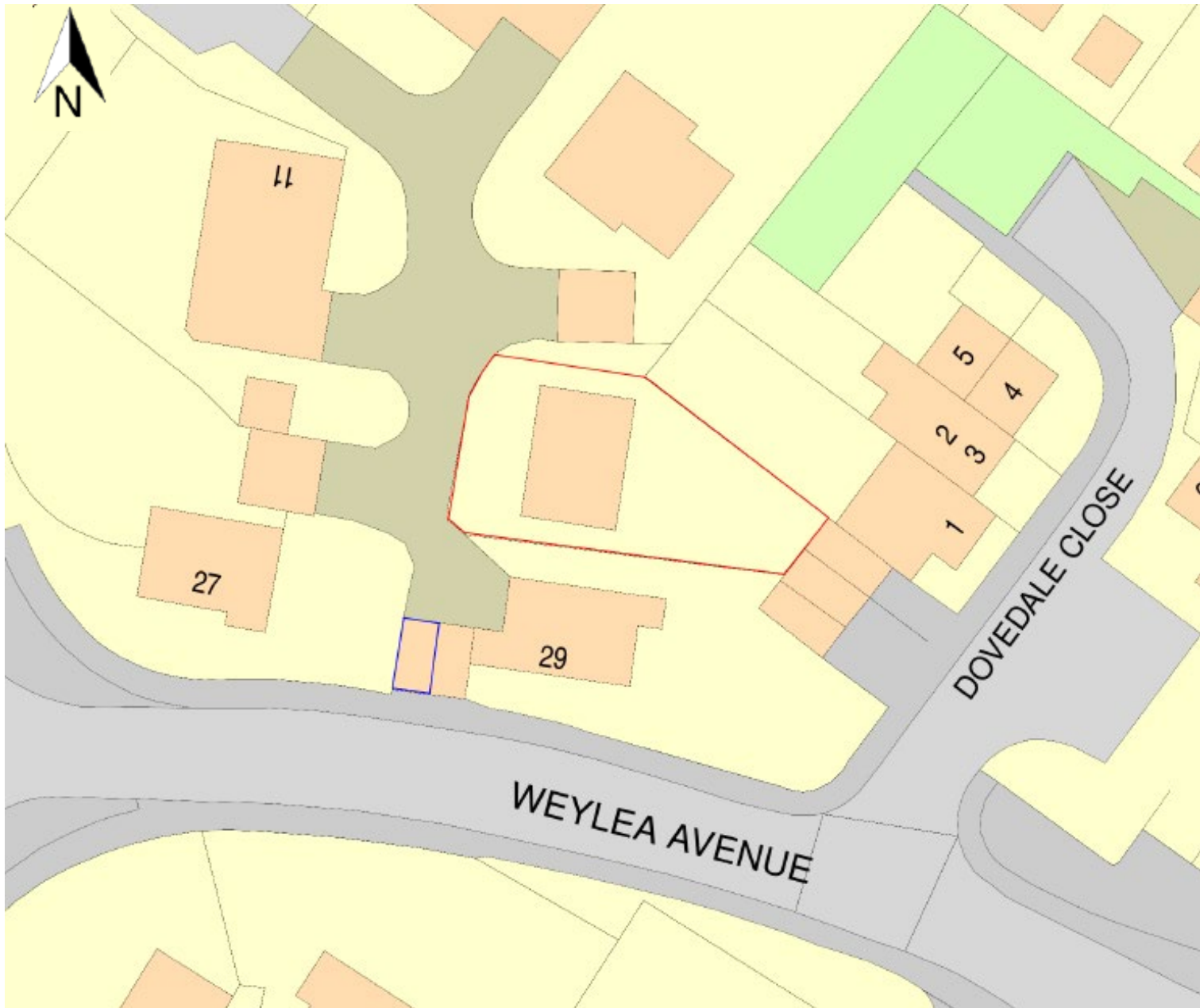


Location plan

[Previous](#)

[Next](#)

[Home](#)

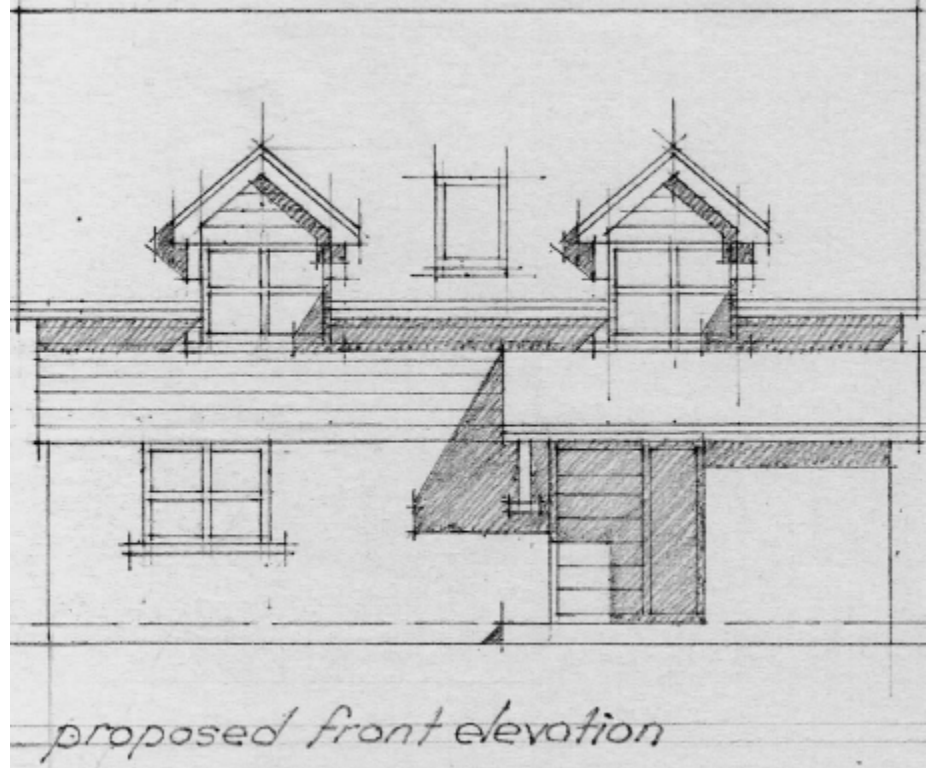
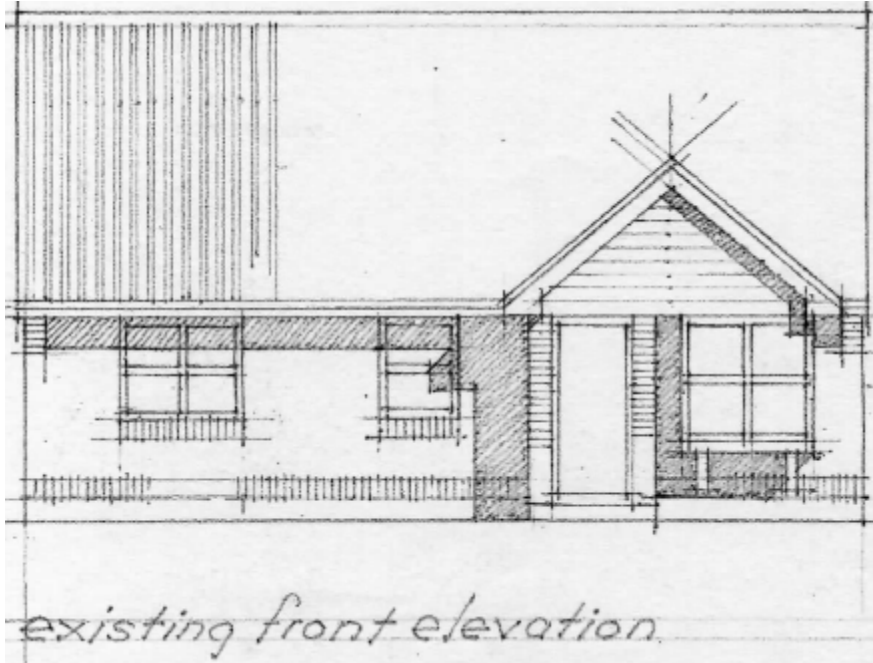


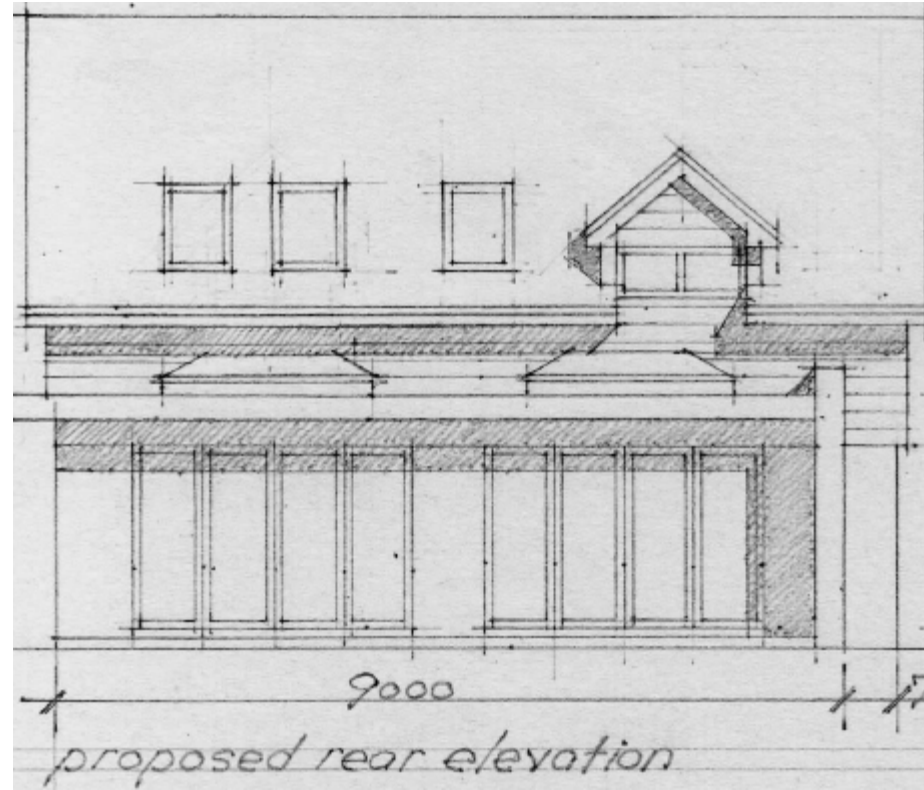
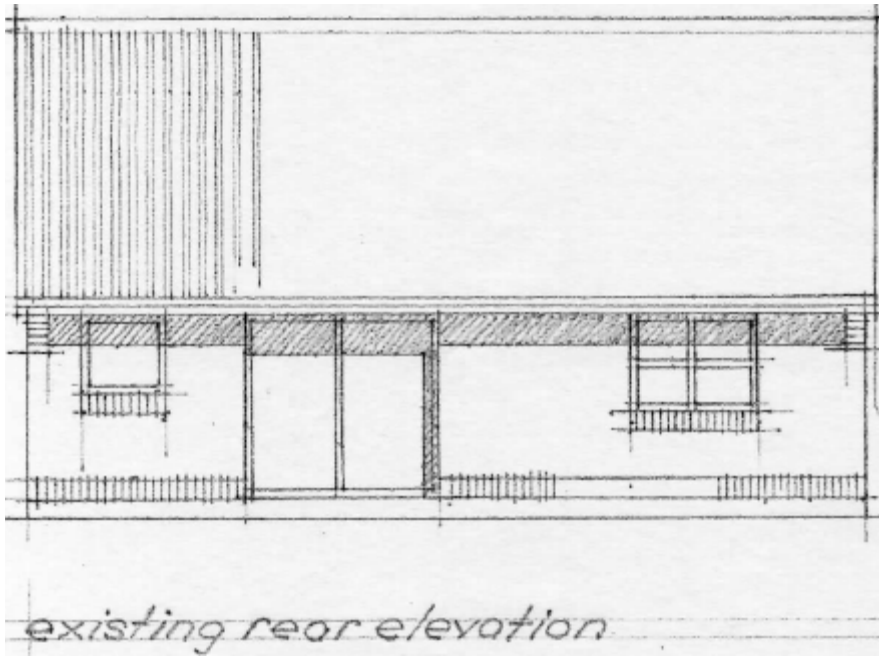
Block plan

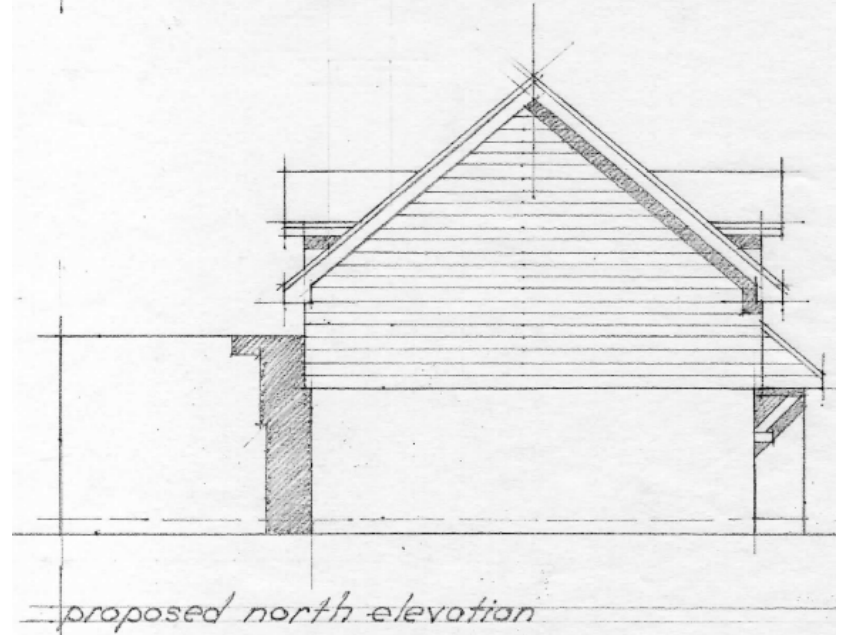
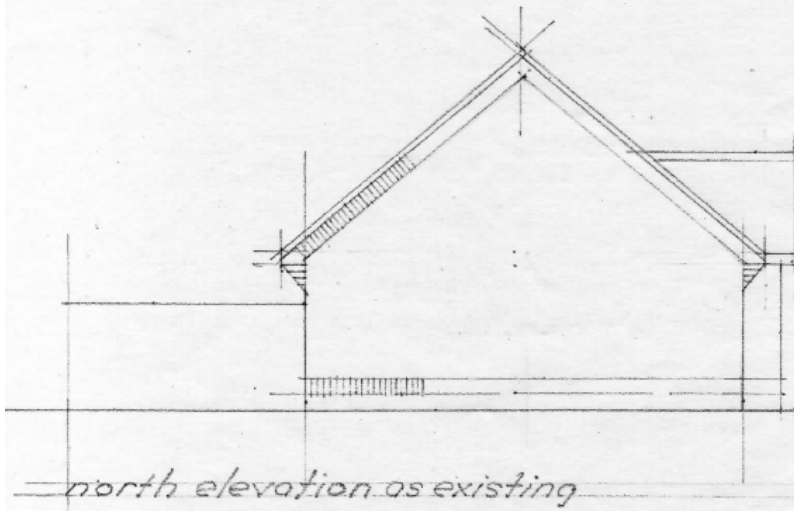
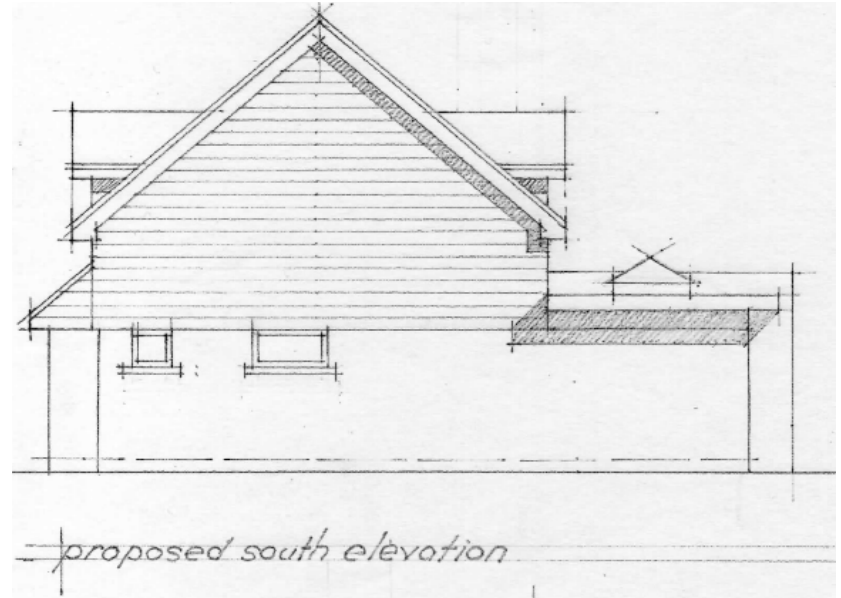
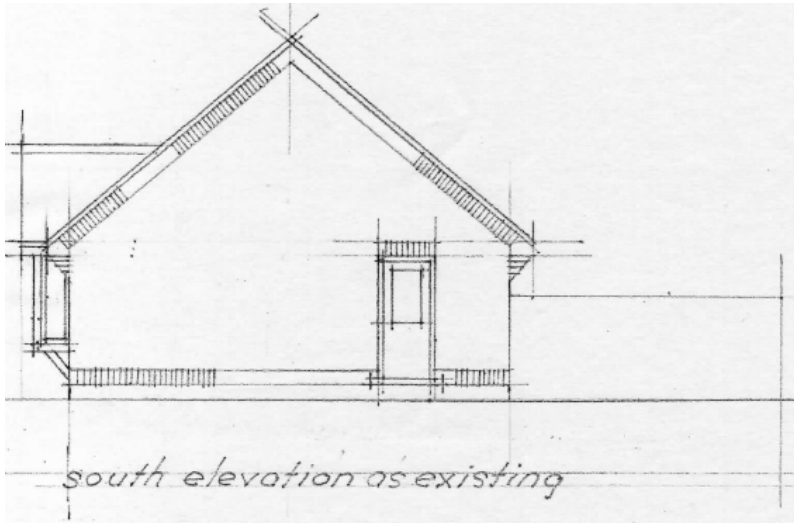
[Previous](#)

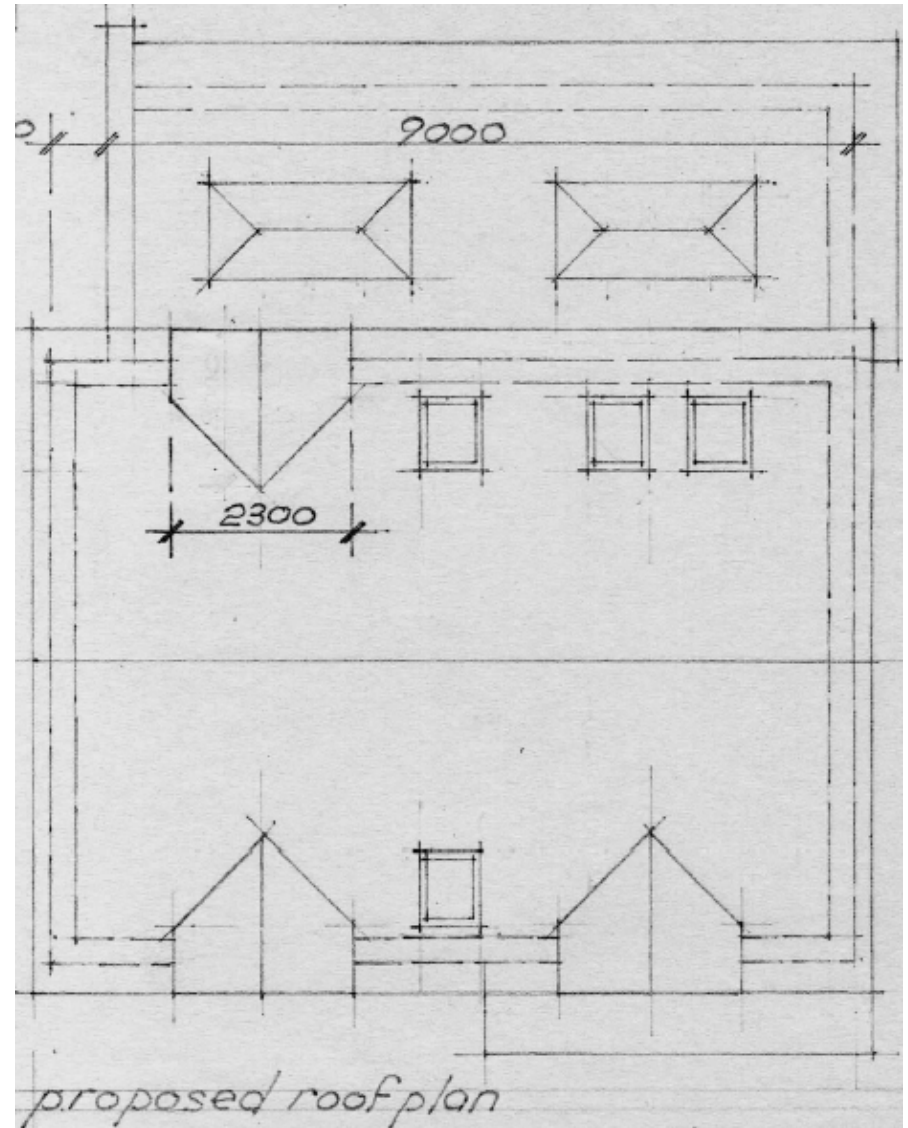
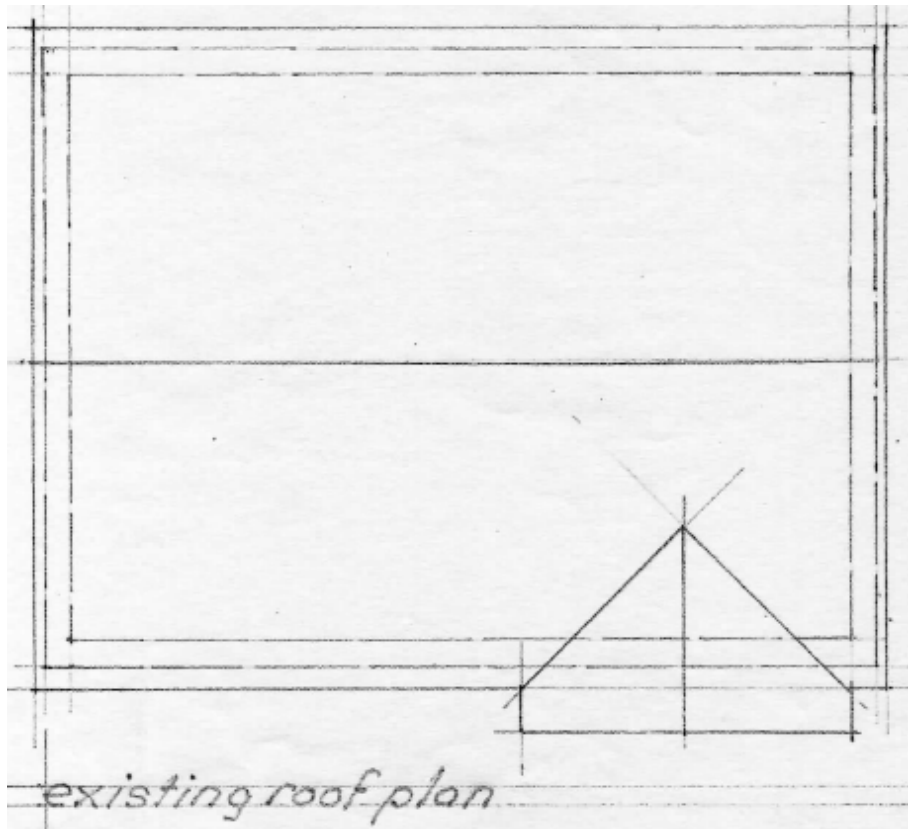
[Next](#)

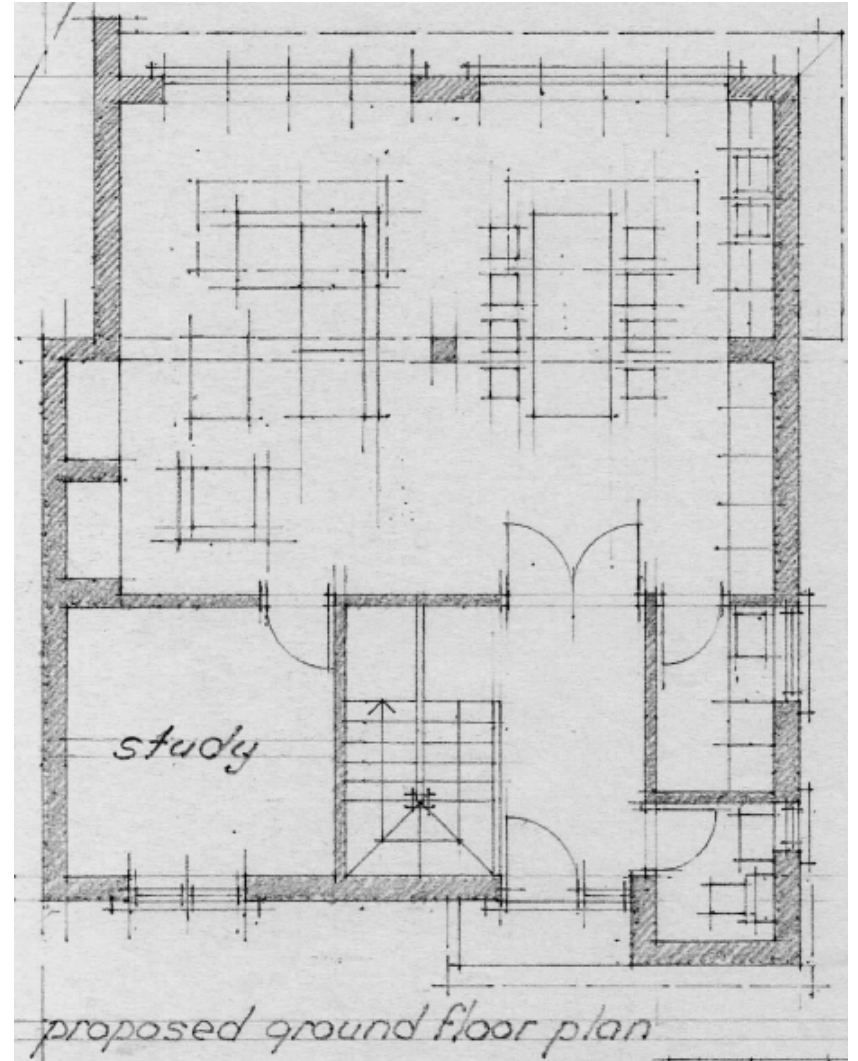
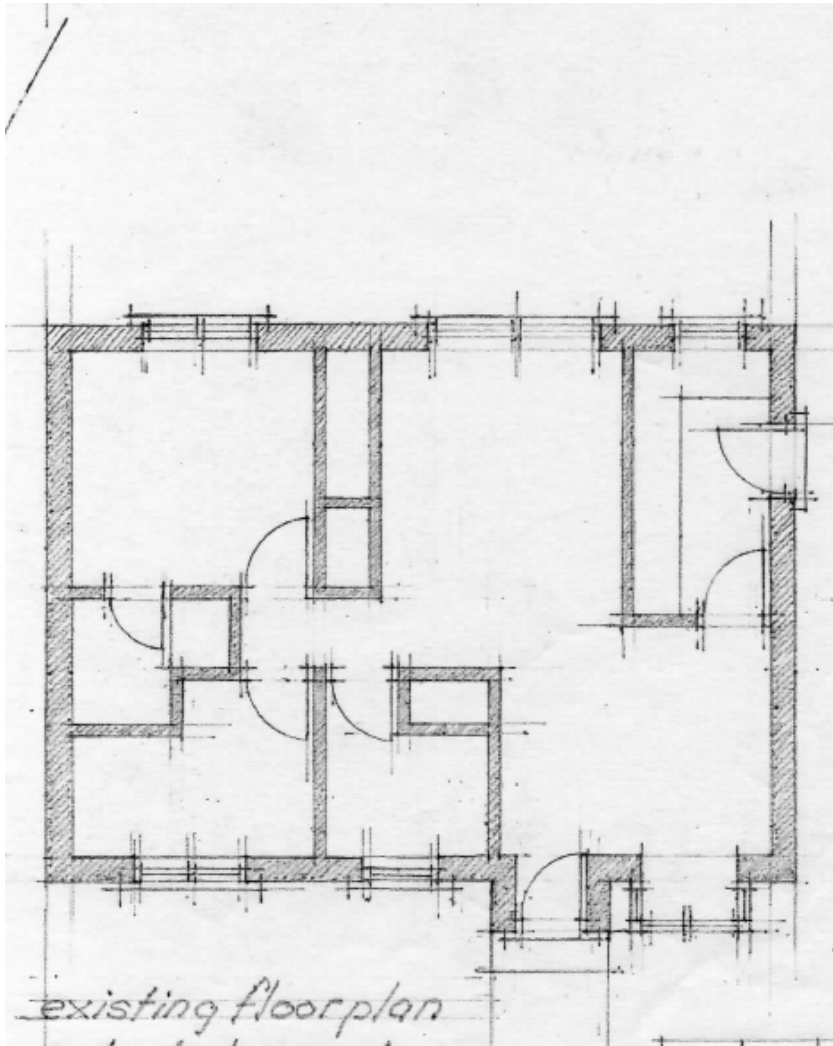
[Home](#)

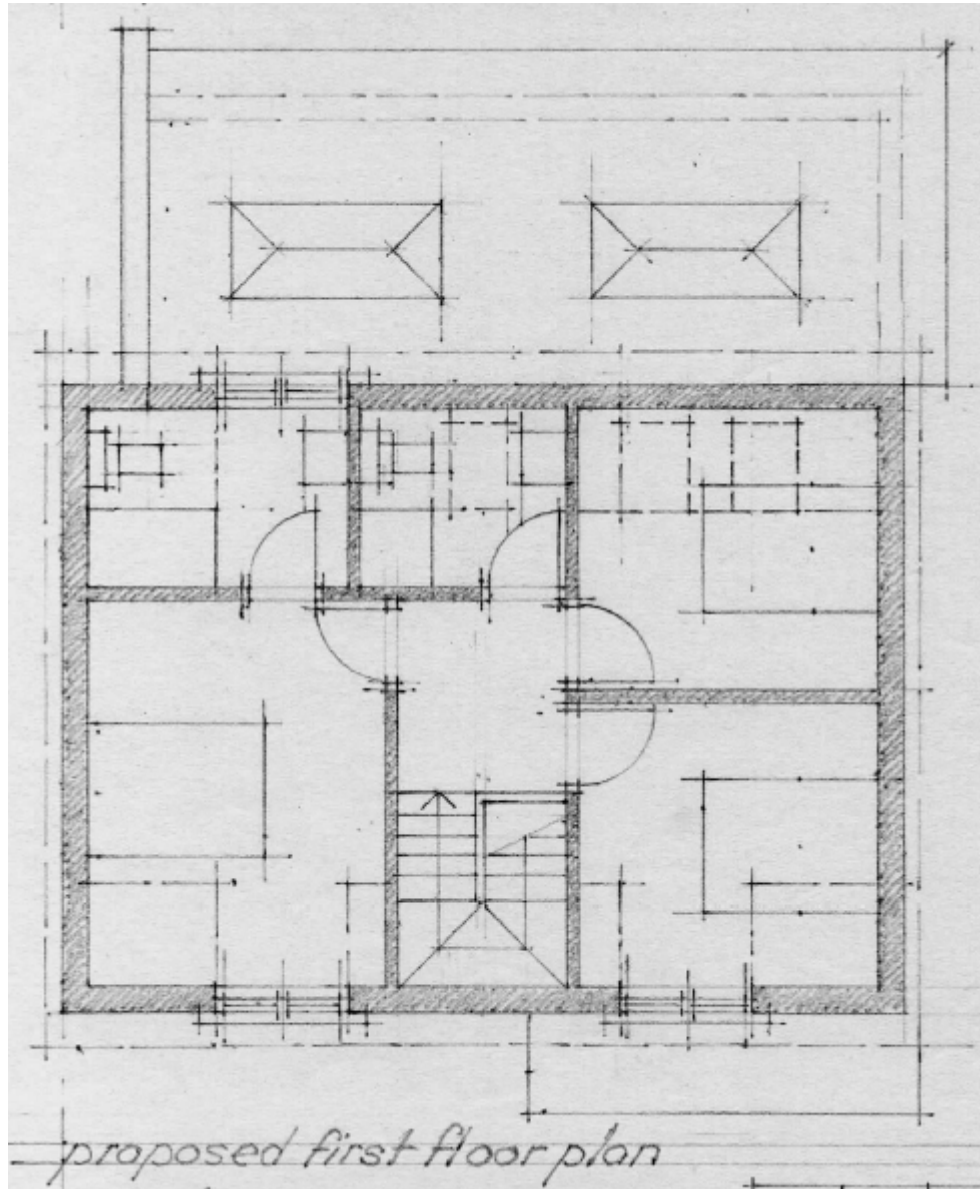












Proposed First Floor Plan

[Previous](#)

[Next](#)

[Home](#)



[Previous](#)

[Next](#)

[Home](#)



[Previous](#)

[Next](#)

[Home](#)



[Previous](#)

[Next](#)

[Home](#)



[Previous](#)

[Next](#)

[Home](#)



[Previous](#)

[Next](#)

[Home](#)



[Previous](#)

[Next](#)

[Home](#)



[Previous](#)

[Next](#)

[Home](#)

20/P/01462

**9 Whitemore Road
Guildford**

[Previous](#)

[Next](#)

[Home](#)

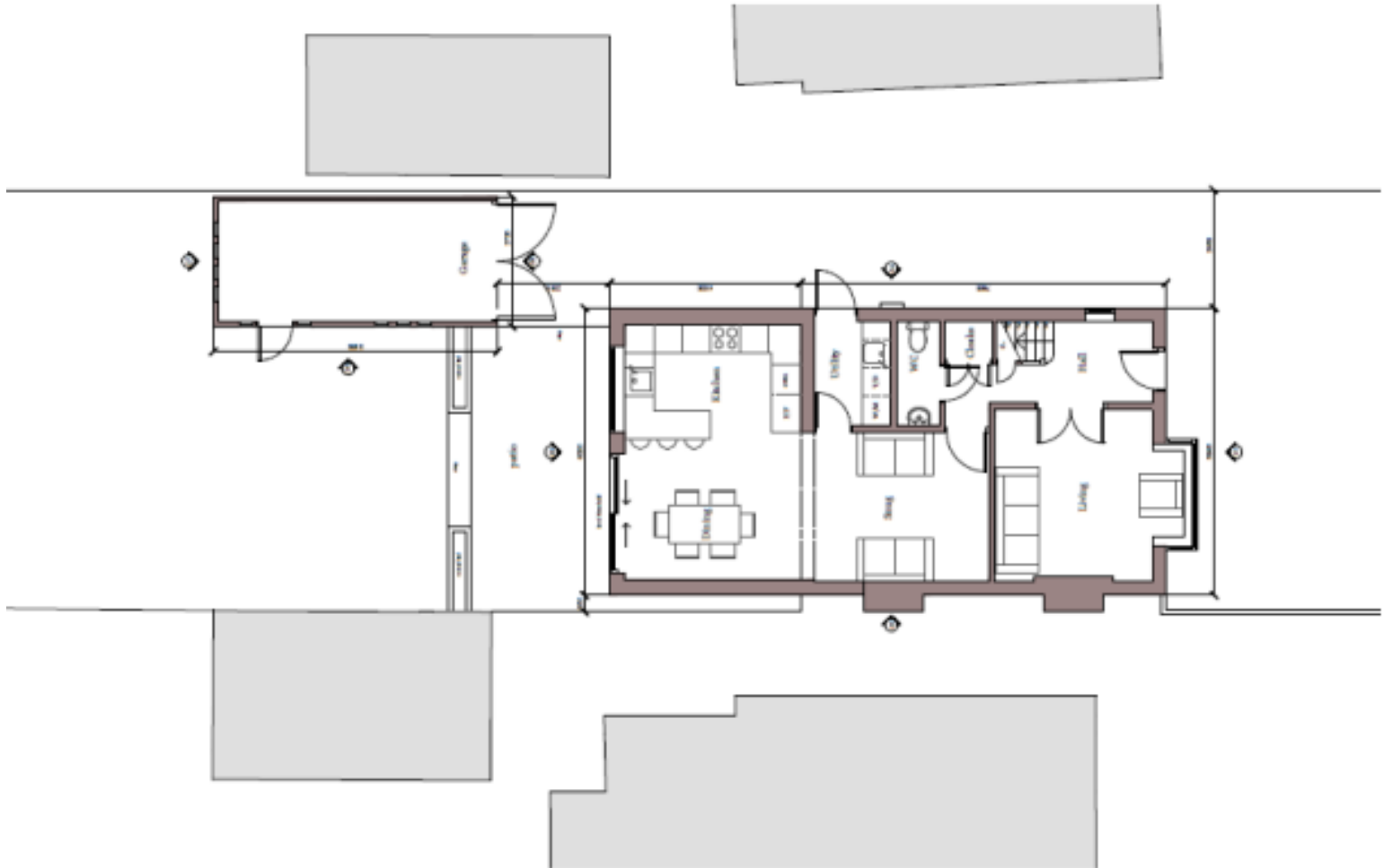


Location plan

[Previous](#)

[Next](#)

[Home](#)

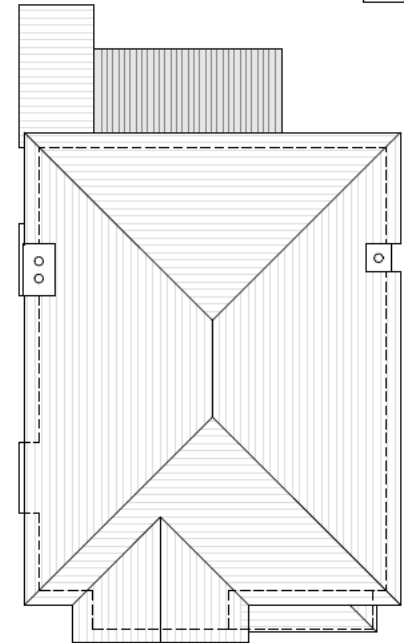
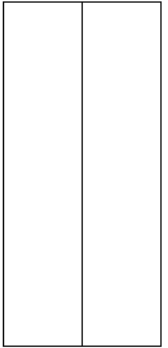
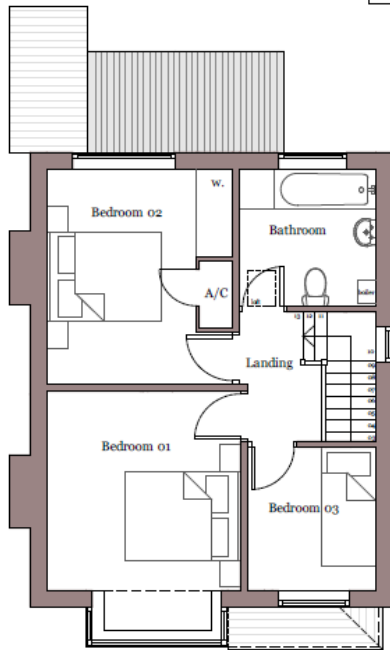
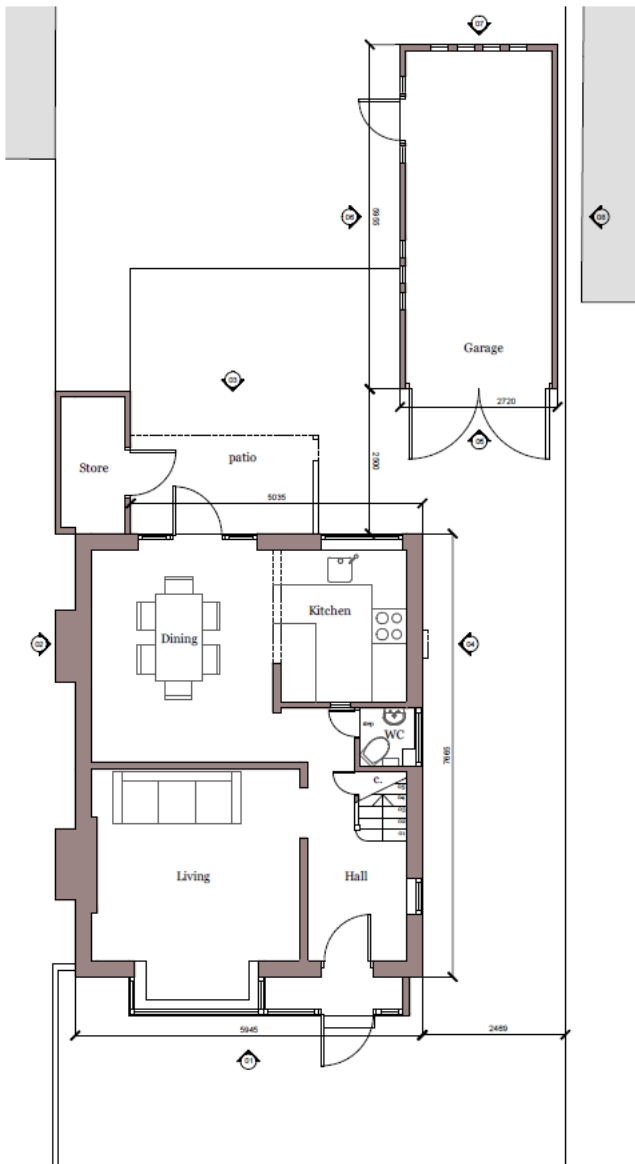


Block plan

[Previous](#)

[Next](#)

[Home](#)

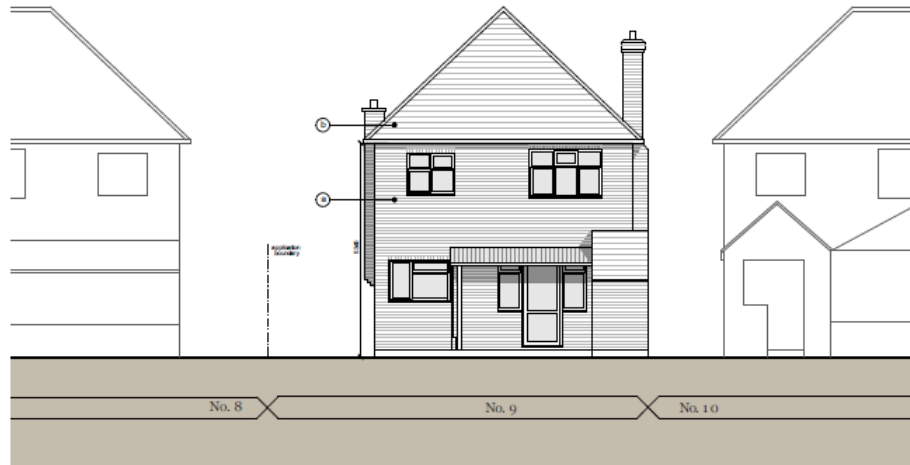


Existing Floor and Roof Plans

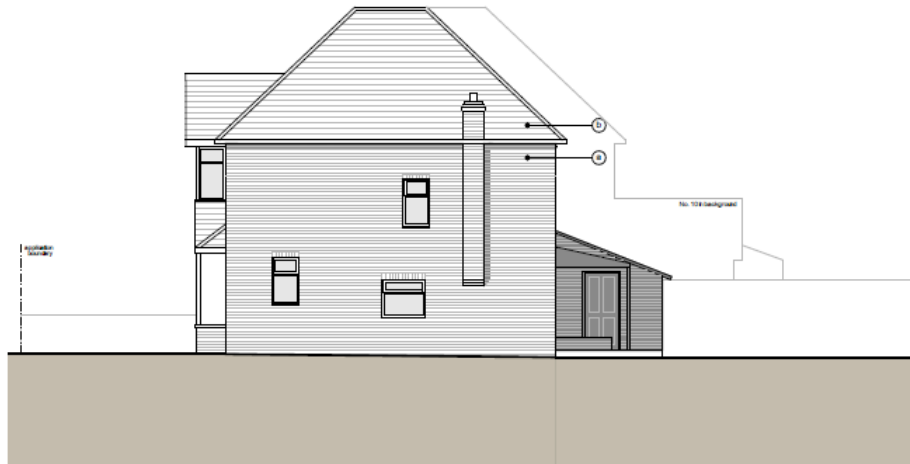
[Previous](#)

[Next](#)

[Home](#)



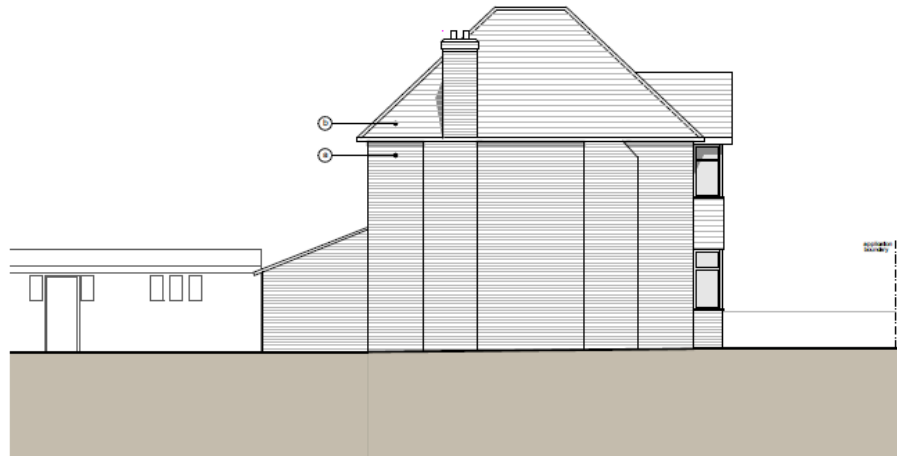
03. Rear Elevation (West)



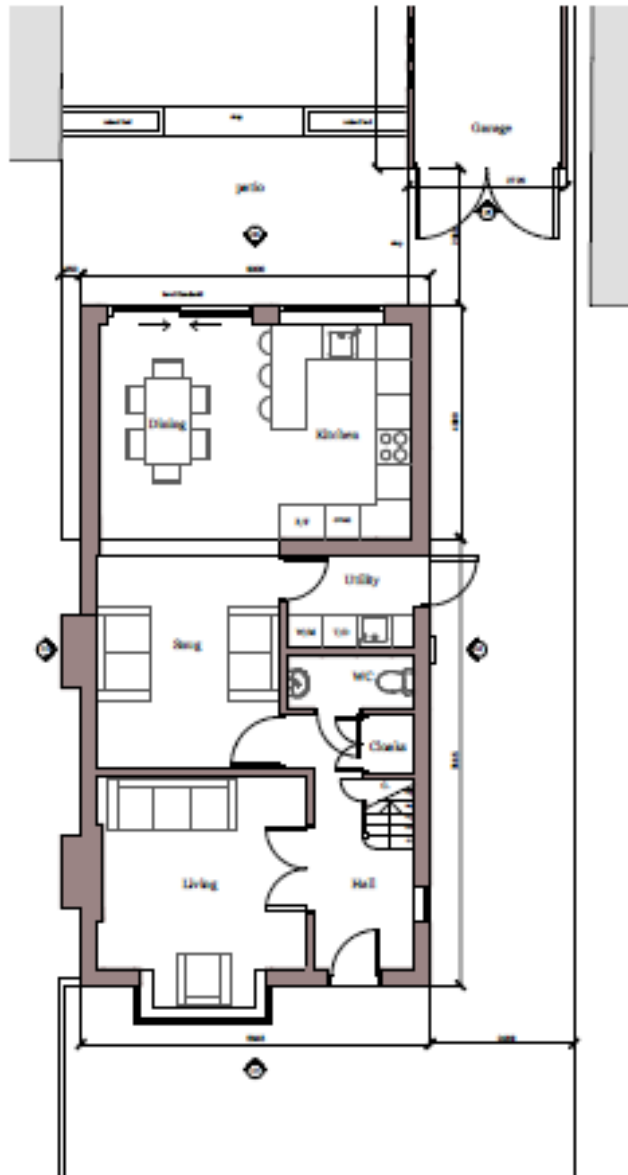
04. Side Elevation (North)



01. Front Elevation (East)



02. Side Elevation (South)

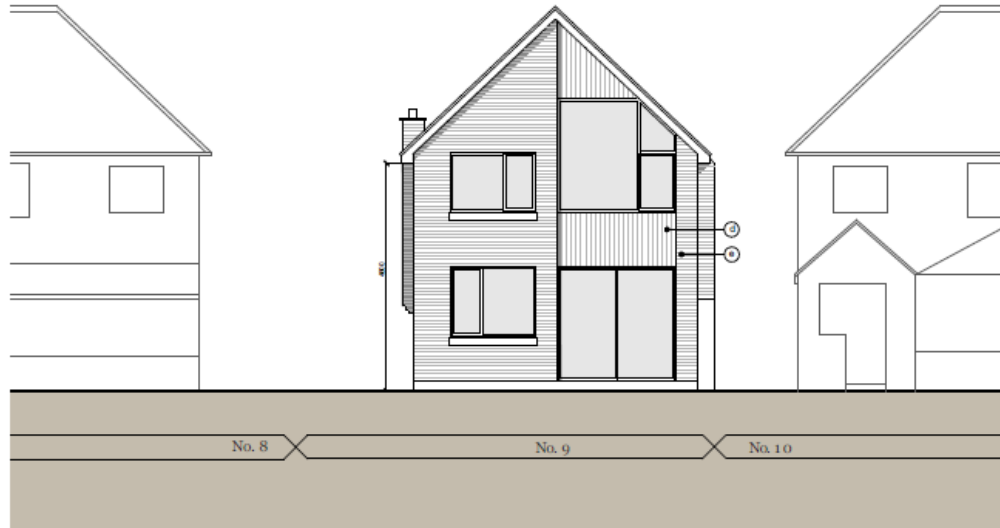


Proposed ground floor plan

[Previous](#)

[Next](#)

[Home](#)



03. Rear Elevation (West)



04. Side Elevation (North)

Proposed west and north elevations

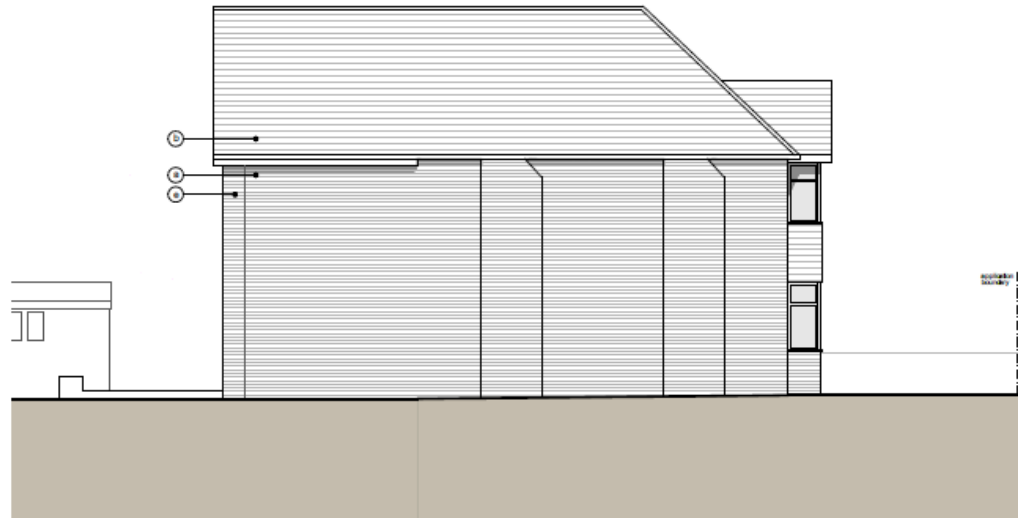
[Previous](#)

[Next](#)

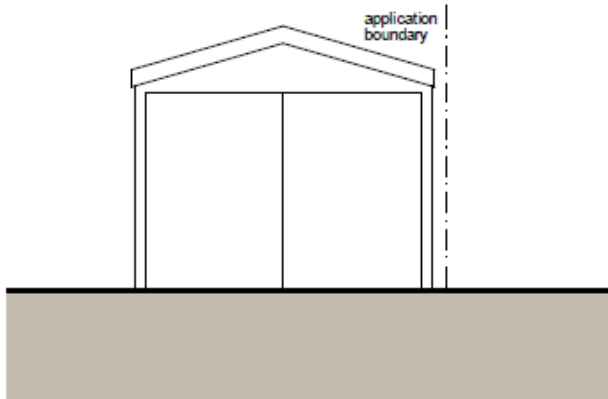
[Home](#)



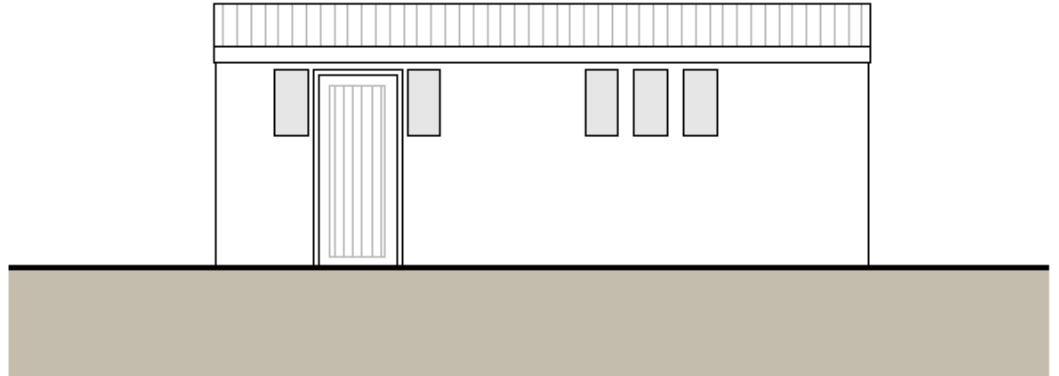
01. Front Elevation (East)



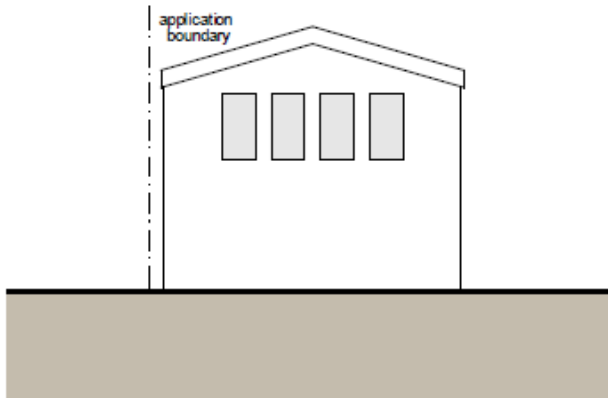
02. Side Elevation (South)



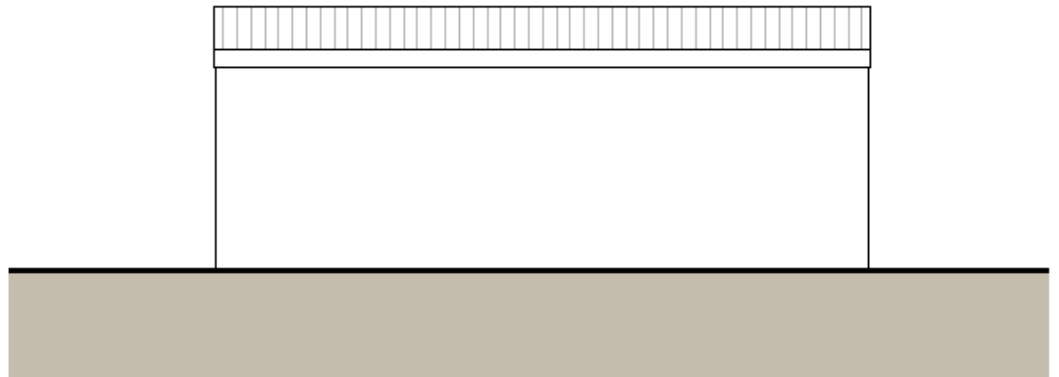
05. Front Elevation (East)



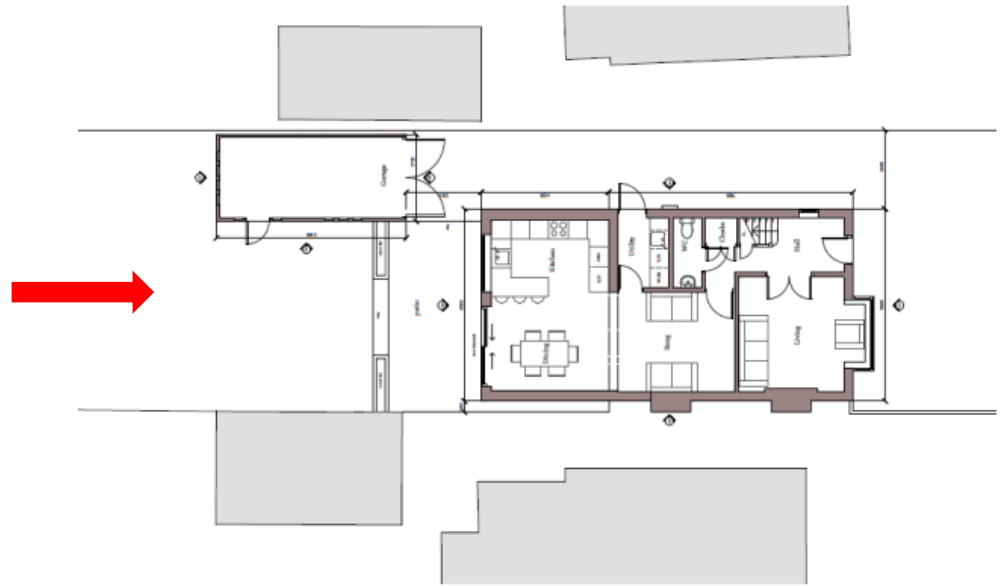
06. Side Elevation (South)



07. Rear Elevation (West)



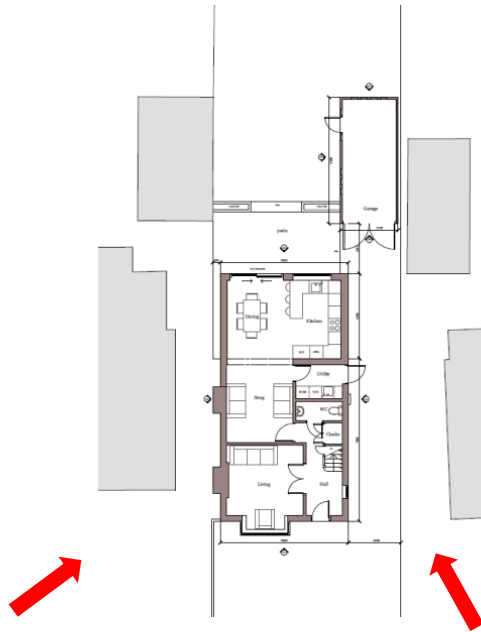
08. Side Elevation (North)



[Previous](#)

[Next](#)

[Home](#)



[Previous](#)

[Next](#)

[Home](#)

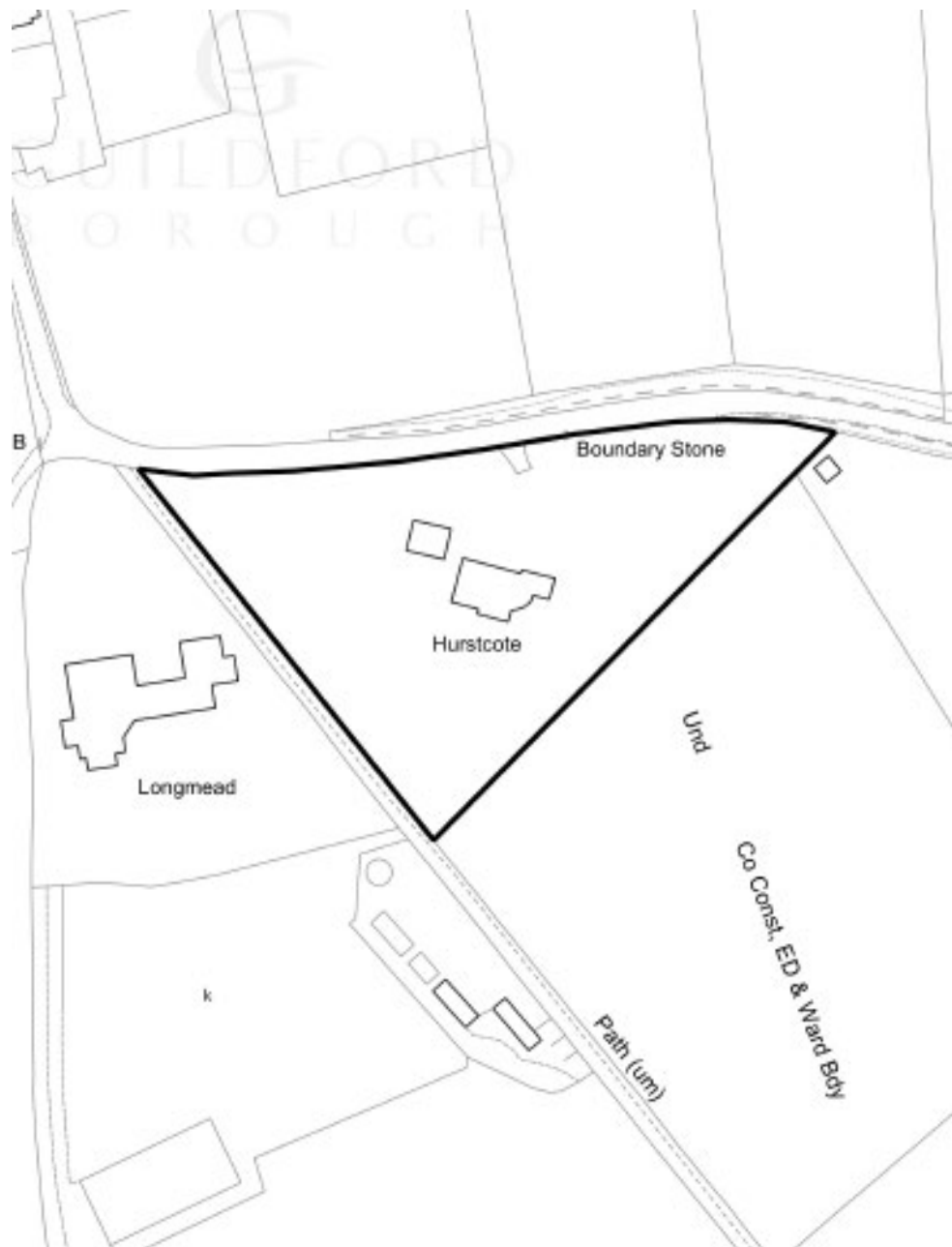
20/P/01377

**Hurstcote
Halfpenny Lane
Chilworth**

[Previous](#)

[Next](#)

[Home](#)

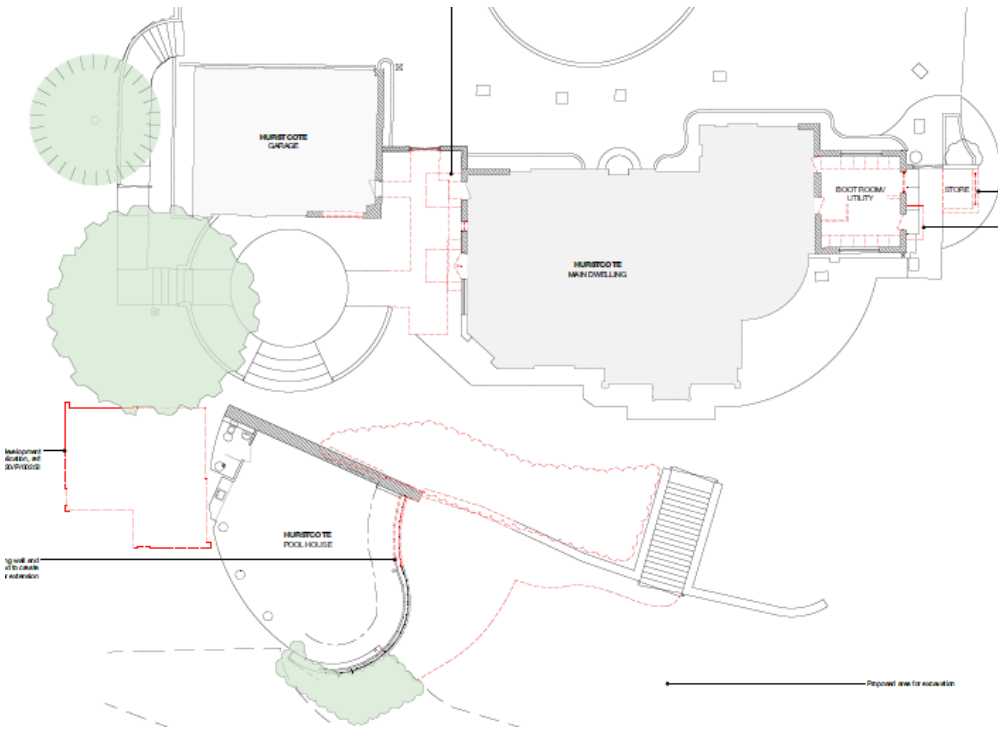


Location plan

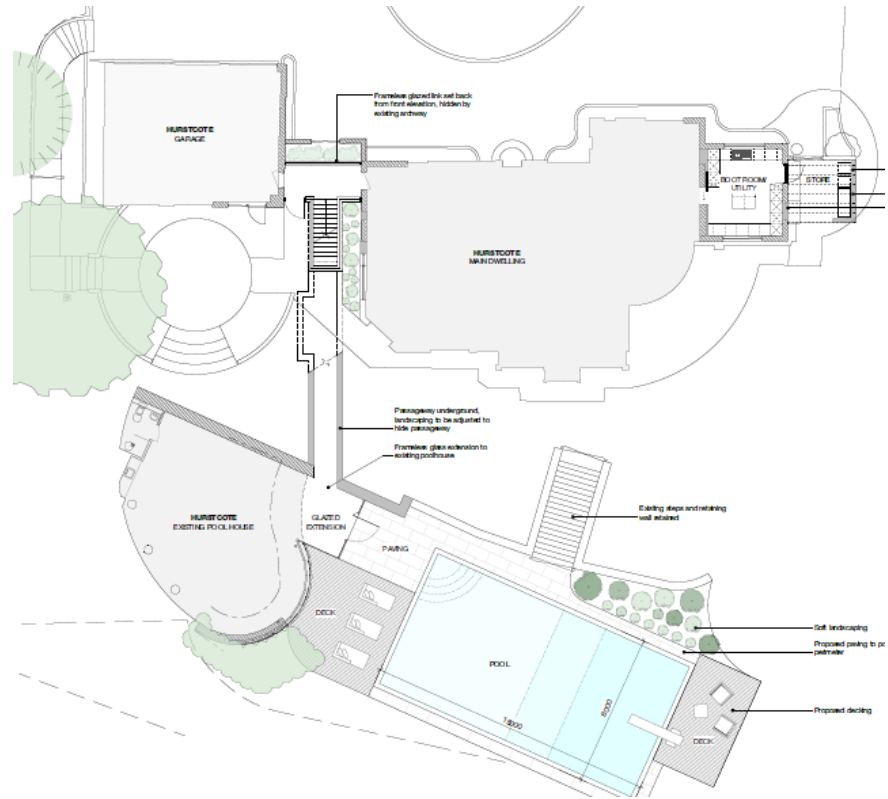
[Previous](#)

[Next](#)

[Home](#)



Existing ground floor plan

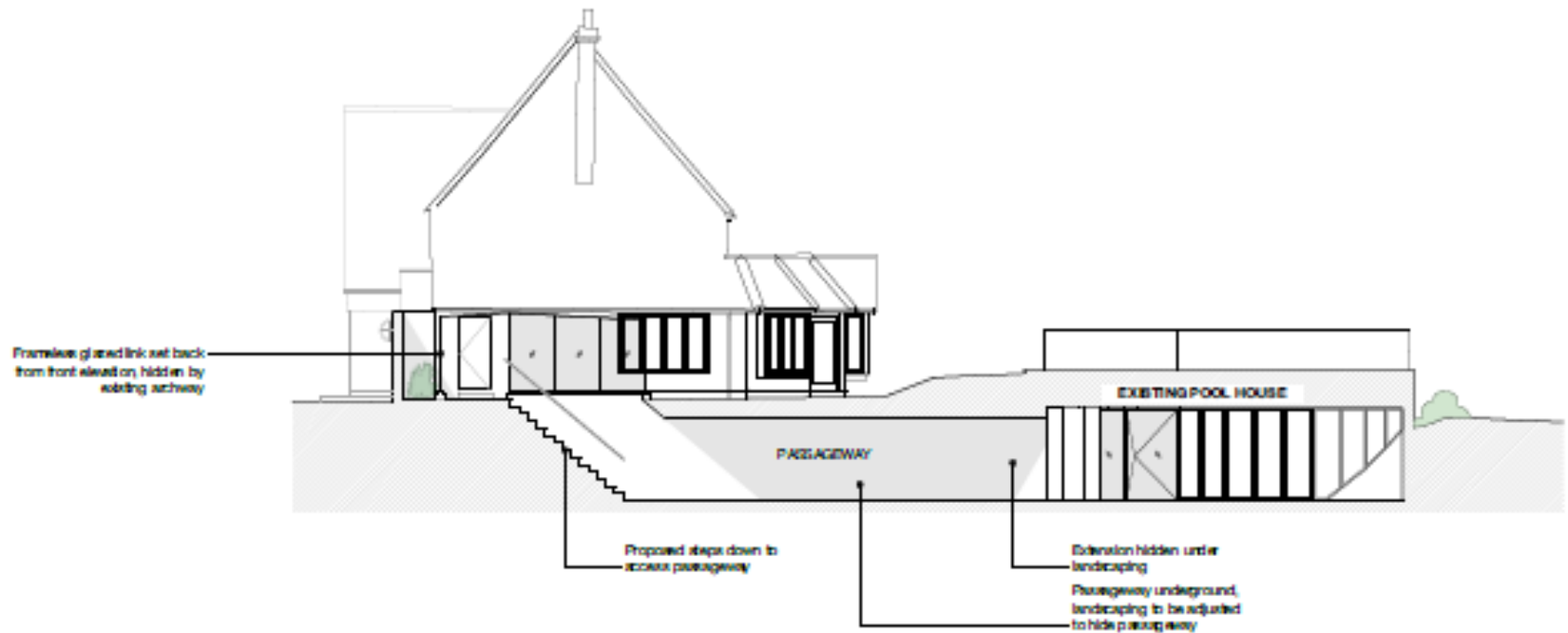


Proposed ground floor plan

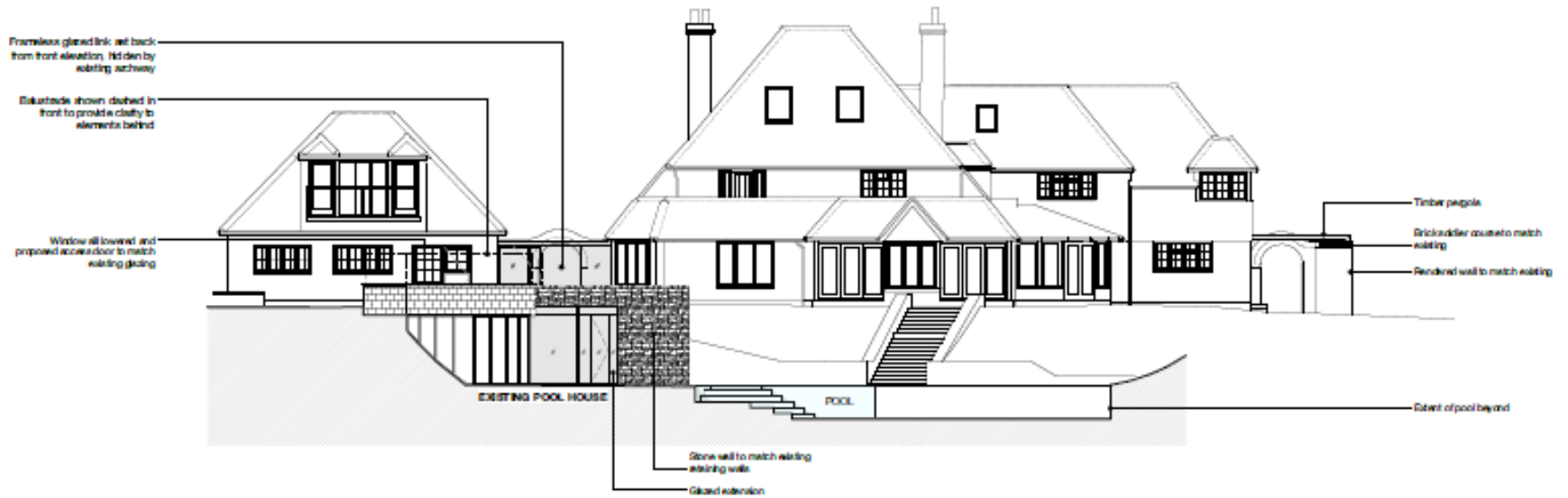
Previous

Next

Home



Proposed west elevation



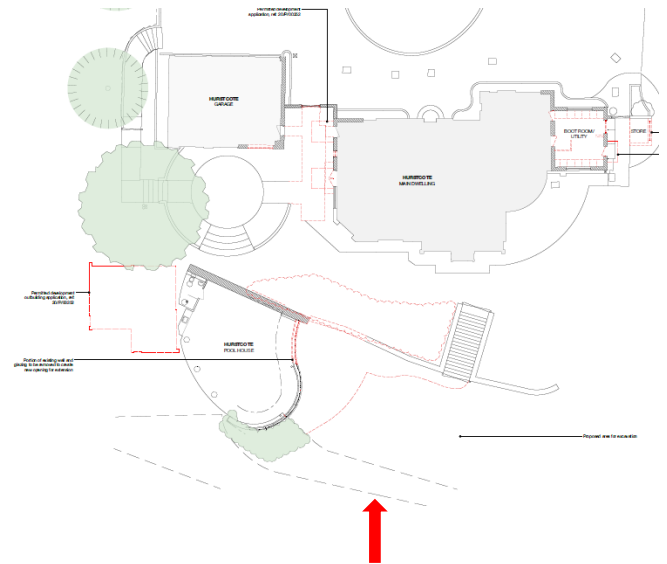
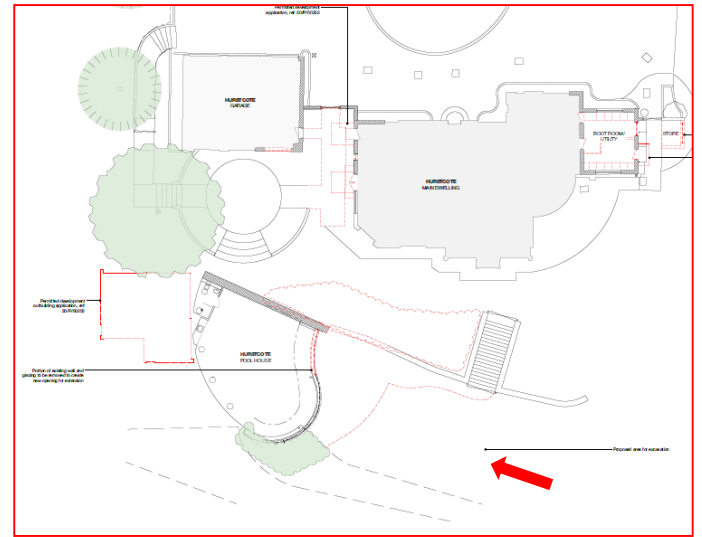
2 PROPOSED SOUTH ELEVATION

Proposed south elevation

Previous

Next

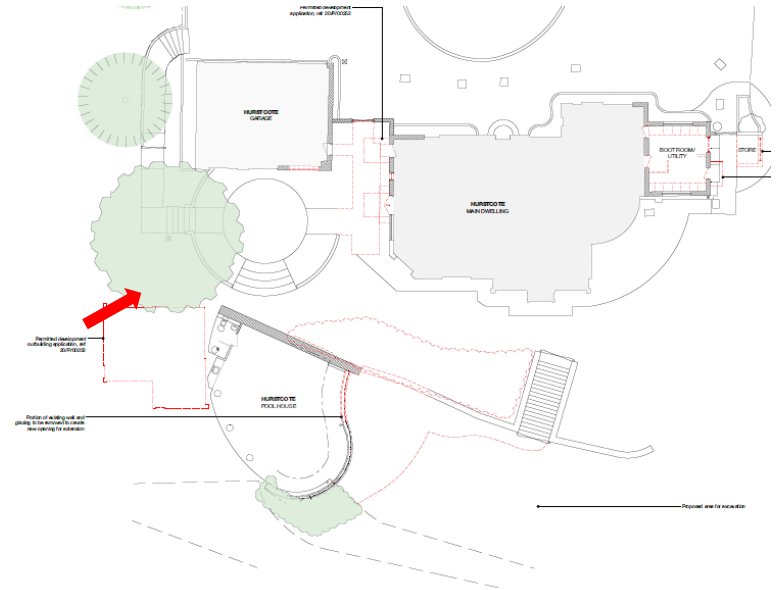
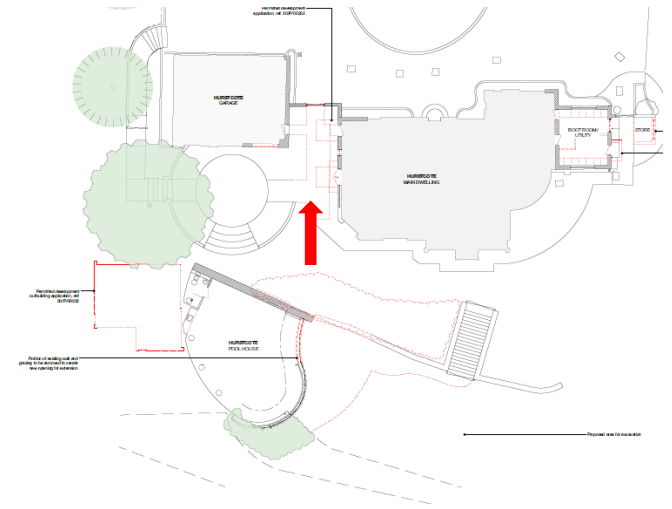
Home



[Previous](#)

[Next](#)

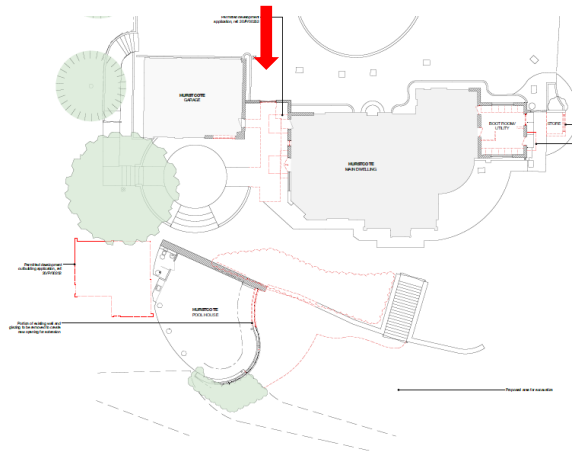
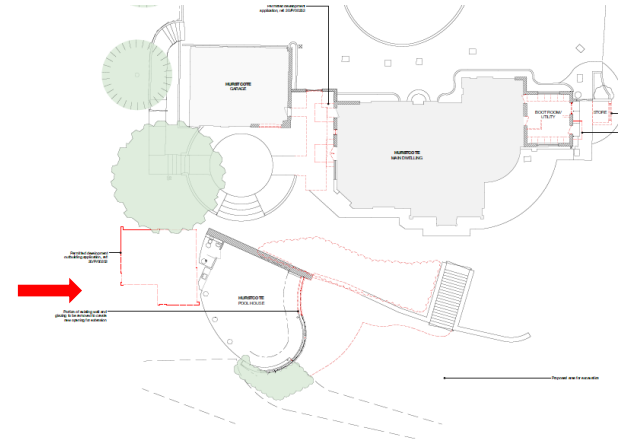
[Home](#)



[Previous](#)

[Next](#)

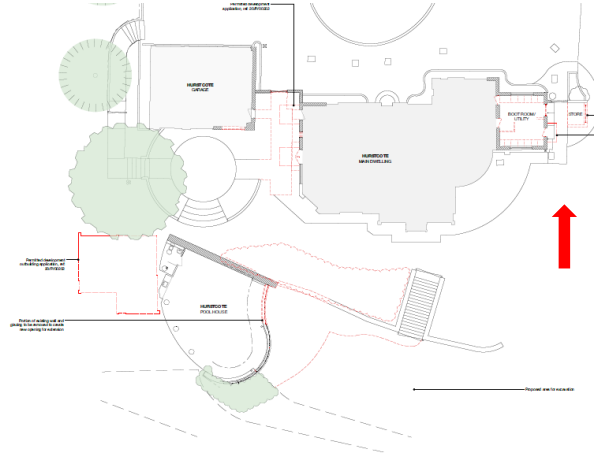
[Home](#)



[Previous](#)

[Next](#)

[Home](#)



[Previous](#)

[Next](#)

[Home](#)

This page is intentionally left blank